



## Second SIMA Workshop with Ship Operators

# Vessel Maintenance and Inspection Responsibilities of ship owners

*14 December 2022*

# Responsibility over vessel compliance



## Shipping (non-convention vessel safety) regulations 2006 (s.3)

### Definition of the 'Company':

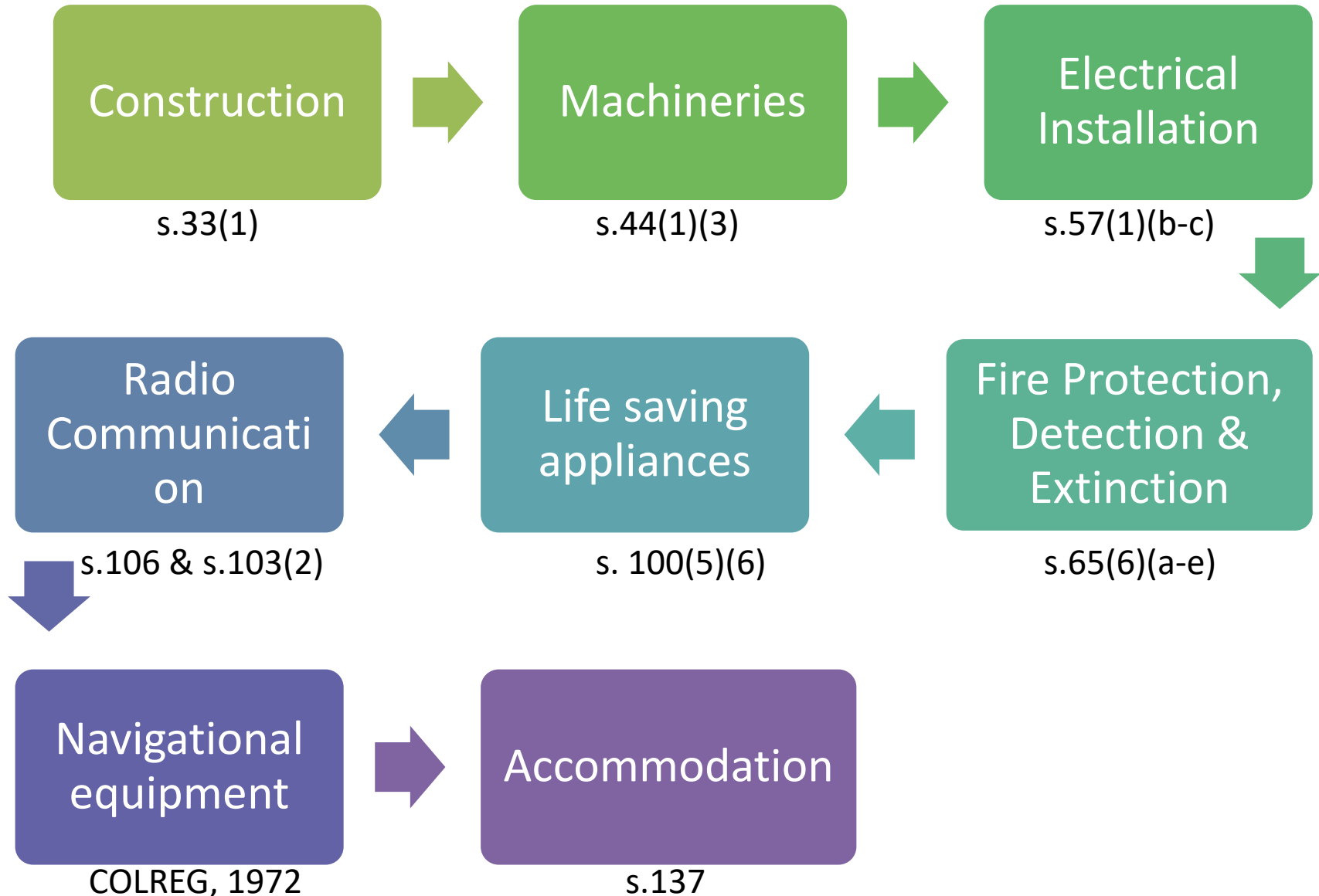
- vessel owner or organization or person
- assuming the responsibility for operation of the vessel
- operations of a vessel refer to duties & responsibility in the International Safety Management (ISM) Code.

## Shipping (non-convention vessel safety) regulations 2006 (s.26(1))

### Responsibility of the 'Company' (owner + master):

- have the vessel inspected and holding safety certificates
- maintain condition of the vessel & equipment to:
  - comply with the provisions of the Regulations
  - ensure the vessel remain fit to proceed to sea
- make no change to vessel & equipment without SIMA approval
- immediately report any accident or defect affecting safety or compliance.

# Maintenance of vessel & equipment



# Inspections & Surveys

## Surveys & Inspections s.17

Initial Survey s.18 (a-j)

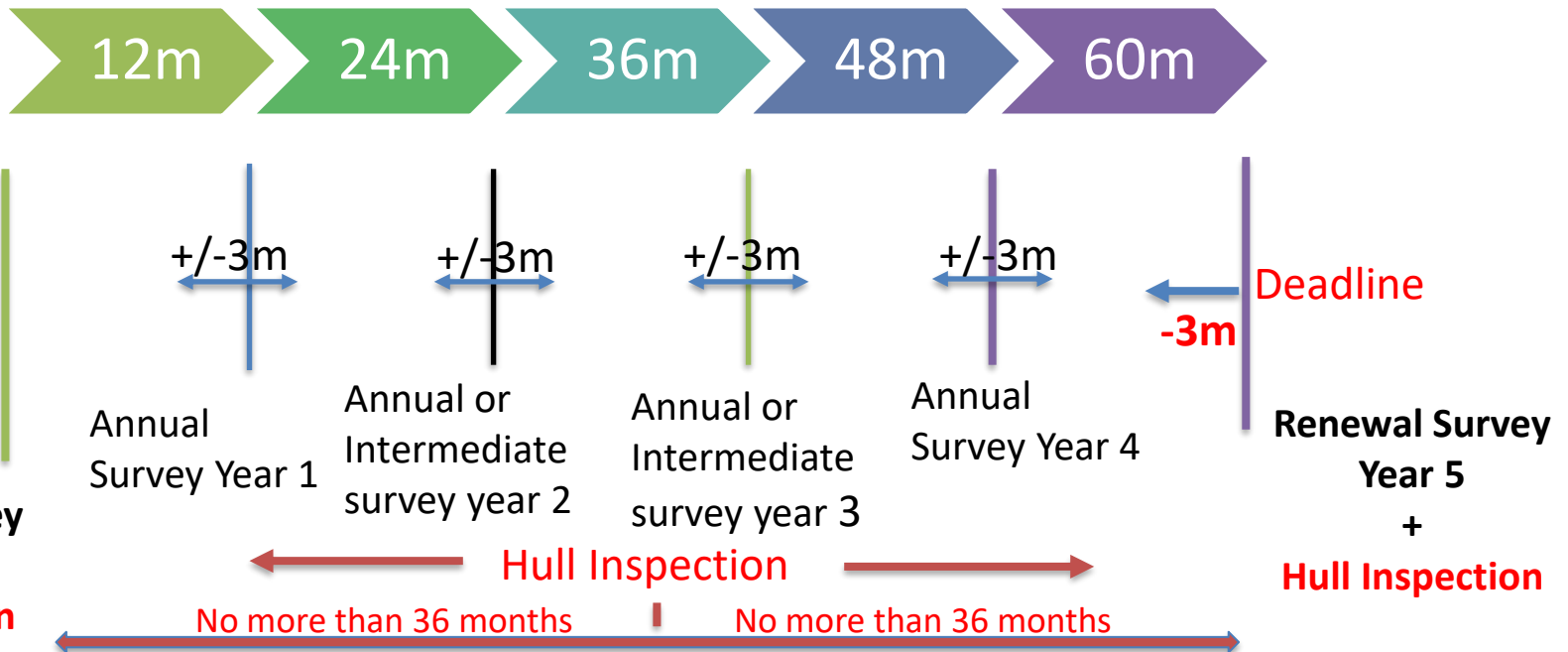
Renewal Survey s.19

Intermediate survey s.20

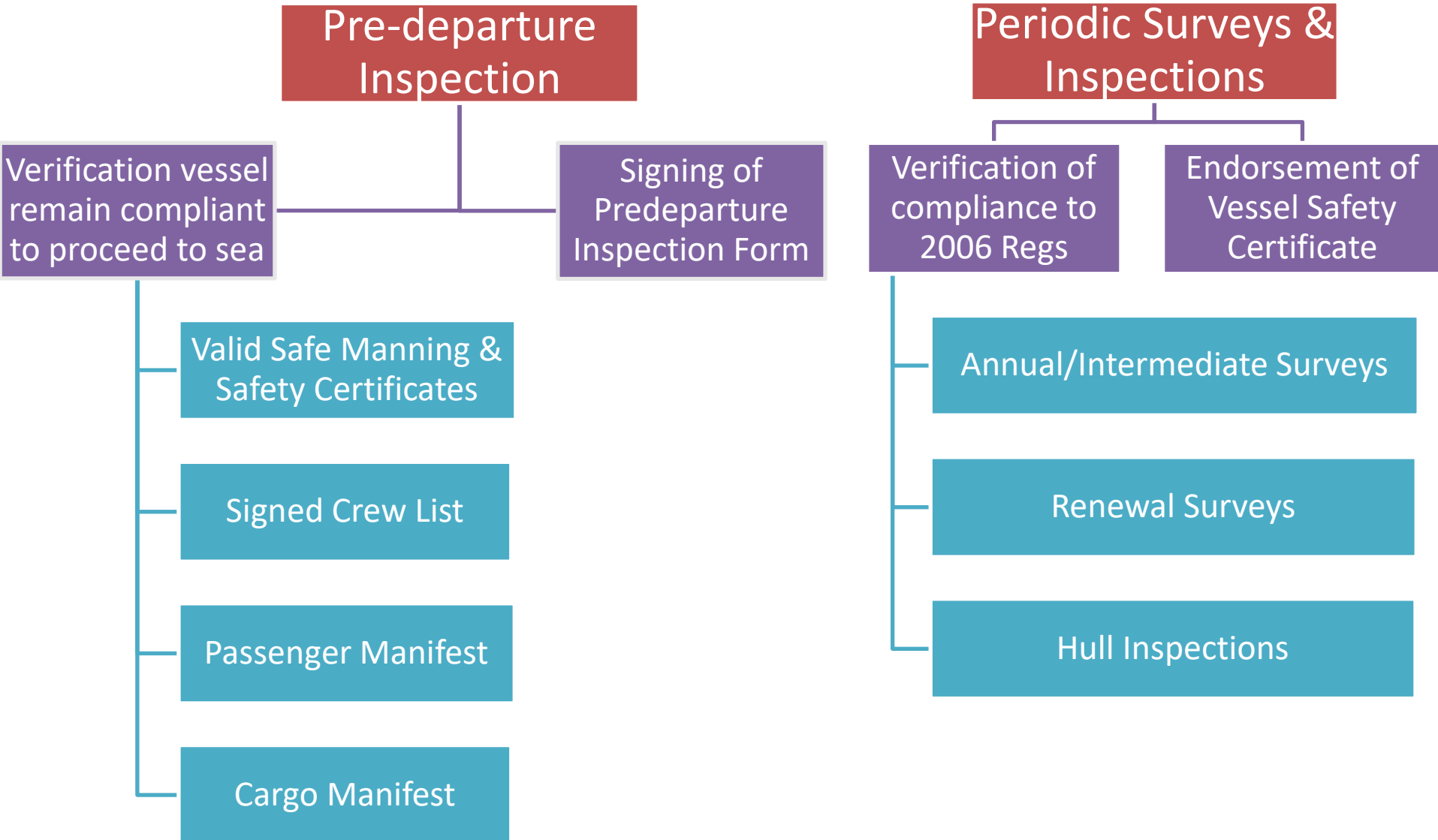
Annual Survey s.21

Additional Survey s.22

Hull Inspection s.23



# Surveys and Inspections



# Maintenance & Safe Operations of Vessels

## Technical

Compliance to 2006  
Regs.

Technical  
maintenance

Technical surveys and  
inspections by SIMA

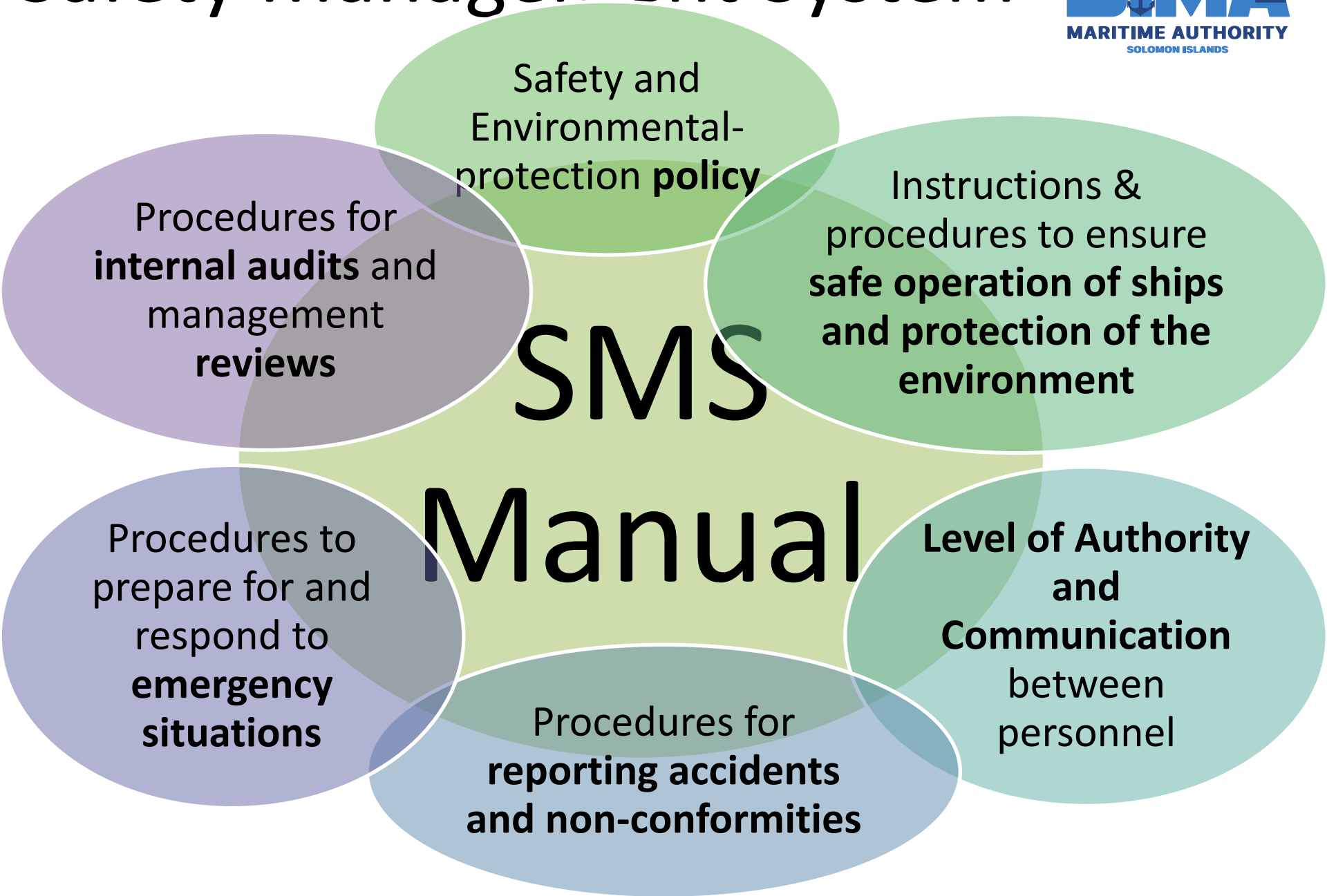
## Operational

Compliance to ISM  
Code or equivalent

Safety Management  
System

Audits by SIMA

# Safety Management System



Safety and Environmental-protection **policy**

Instructions & procedures to ensure **safe operation of ships** and **protection of the environment**

Procedures for **internal audits** and management **reviews**

**SMS**  
**Manual**

**Level of Authority and Communication** between personnel

Procedures for **reporting accidents** and **non-conformities**

Procedures to prepare for and respond to **emergency situations**



# TAGIO TUMAS

E [contact@sima.gov.sb](mailto:contact@sima.gov.sb)

P (677) 21 535

PO Box 1932, Honiara  
Solomon Islands

[www.sima.gov.sb](http://www.sima.gov.sb)