

# NATPLAN

SOLOMON ISLANDS NATIONAL MARINE SPILL CONTINGENCY PLAN

## Amendments

<b>Rev.</b>	<b>Date</b>	<b>Nature of Changes</b>	<b>Approved By</b>
0	01/10/2013	Original issue	
1	11/11/2024	NATPLAN Workshop Review	
2	21/11/2025	Amendments after NATPLAN Workshop Review	
3	24/11/2025	Approved version for implementation	Director SIMA

# Table of Contents

## Contents

Amendments.....	ii
Table of Contents.....	iii
Abbreviations .....	v
INTRODUCTION.....	7
Background .....	7
Purpose .....	7
Objectives .....	7
Principles and Priorities .....	7
Geographical scope.....	8
ORGANISATION.....	9
Stakeholders.....	9
Category of marine pollution and response organisation .....	10
Tiered Response Concept.....	11
Tier One (1).....	12
Tier Two (2) .....	12
Tier Three (3) .....	12
Oversight responsibility .....	12
Director SIMA .....	12
Marine Pollution Advisory Committee .....	12
Solomon Islands Maritime Authority .....	12
Operational responsibilitiesMaritime Rescue Coordination Centre .....	13
Incident Controller.....	13
Polluter .....	13
Owner or operator of port, oil or chemical handling and storage facility .....	14
External Assistance and technical support .....	14
INCIDENT RESPONSE .....	15

Incident Control System .....	15
Incident Response.....	16
Response Phases .....	16
Detection of spill, notification and alerting authorities .....	17
Evaluation, Situation Analysis & Plan Activation .....	18
Response and Containment of spill or discharge of pollutant waste .....	20
Clean up and disposal of oil/chemical waste .....	21
Site rehabilitation and cost recovery, Long term Monitoring.....	22
Communication .....	22
EQUIPMENT AND TRAINING CAPACITY .....	22
Equipment .....	22
Training, Drills & Exercises .....	23
Drill & Exercises .....	23
LEGISLATION, ENFORCEMENT AND PROSECUTIONS .....	23
APPROVAL, CONTROL AND REVISION OF THE PLAN .....	24
Appendix 1: SOLOMON ISLANDS NAVIGATIONAL CHARTS .....	25
Appendix 2: EMERGENCY CONTACT DETAILS .....	29
Appendix 3: POLLUTION REPORT (POLREP) FORM & SITUATION REPORT (SITREP) FORM	35
Appendix 4: NATIONAL OIL SPILL EQUIPMENT INVENTORY.....	36

## Abbreviations

AIS – Automatic Identification System  
AMOSC – Australia Marine Oil Spill Centre  
AMSA – Australian Maritime Safety Authority  
DFAT – Australia Department of Foreign Affairs and Trade  
ECD – Environment Conservation Division  
EEZ – Exclusive Economic Zone  
FAO – Finance & Administration Officer  
GMDSS – Global Maritime Distress Safety System  
HAZMAT - Hazardous Materials  
HF – High Frequency  
HNS – Hazardous and Noxious Substances  
IC – Incident Controller  
IMO – International Maritime Organization  
IRT – Incident Response Team  
LO – Logistics Officer  
LRIT – Long Range Identification and Tracking  
MF – Medium Frequency  
MRCCHON – Maritime Rescue Coordination Centre Honiara  
NATPLAN – Solomon Islands National Marine Spill Contingency Plan  
NDMO – National Disaster Management Office  
NDMP – National Disaster Management Plan 2018  
OO – Operation Officer  
OSC – On-Scene Commander  
OSLR – Oil Spill Response Limited  
P&I – Protection and Indemnity Club  
PACPLAN – Pacific Islands Regional Marine Spill Contingency Plan  
PO – Planning Officer  
POLFUND – National Pollution Fund  
POSTREP – Post-incident Report  
RSIPF – Royal Solomon Islands Police Force  
SARPLAN – Search and Rescue Plan  
SCAT – Shoreline Clean-up Assessment Technique  
SIMA – Solomon Islands Maritime Authority  
SIMA E-gate – Integrated information management database  
SIMS – Solomon Islands Meteorological Services  
SITREP – Situation Report

SPREP – Secretariat of the Pacific Environment Program  
VHF – Very High Frequency

# INTRODUCTION

## Background

The Solomon Islands developed its National Marine Spill Contingency Plan under the Shipping (Marine Pollution) Regulations 2011 to protect its fragile marine environment and coastal communities from marine pollution. These regulations give effect to international conventions the country has ratified, including:

- MARPOL 73/78 – Prevents pollution from ships by regulating discharges of oil, and harmful substances (Annexes I, II and III).
- London Convention 1972 – Controls dumping of wastes at sea to safeguard marine ecosystems.
- OPRC 1990 – Requires national systems for oil spill preparedness and response, forming the basis of the contingency plan.
- SPREP Convention 1986 – Strengthens regional cooperation among Pacific Island states to combat marine pollution.

By embedding these commitments into national law, Solomon Islands ensures compliance with global standards, enhances regional cooperation, and builds capacity to respond effectively to marine pollution incident.

## Purpose

1. The purpose of the National Marine Spill Contingency Plan (NATPLAN) is to provide a clear, coordinated and consistent framework for preparing for and responding to marine pollution incidents in the Solomon Islands waters. This plan outlines the essential procedures and operational arrangements required to effectively manage spills originating from ships, aircraft and any other sources that may release oil or hazardous substances into the marine or coastal environment.

## Objectives

2. The primary objectives of the NATPLAN are to:
  - 2.1. **protect** life and the marine and coastal environment from the risk of pollution,
  - 2.2. **contain** a spill and **minimize** the environmental, economic, social, and cultural impacts of a spill, and
  - 2.3. **Restore** the marine and coastal environment as near practicable to conditions before the spill.

## Principles and Priorities

3. The underlying principles of the NATPLAN are:

- 3.1. **Prevention:** regulatory, organizational, and physical measures to prevent spills and mitigate the effects of the pollutant.
  - 3.2. **Preparedness:** arrangements to mobilize and deploy all necessary resources and services.
  - 3.3. **Response:** actions taken during and immediately after a spill in the marine and coastal environment to minimize its effects.
  - 3.4. **Recovery:** arrangements to restore the affected marine and coastal environment in the conditions before the spill.
4. In the event of a marine spill requiring a response to be mounted under the NATPLAN, the following protection priorities should be adhered to (ranked in order of priority):
    - 4.1. human life, health and safety.
    - 4.2. marine environmental ecosystem.
    - 4.3. cultural and historical resources,
    - 4.4. commercial and non-commercial resources and amenities.

## Geographical scope

5. The geographical scope of the NATPLAN, is all of the coastline and all marine waters below highest astronomical tide within the 200 nautical miles (EEZ) of the Solomon Islands (Figure 1).

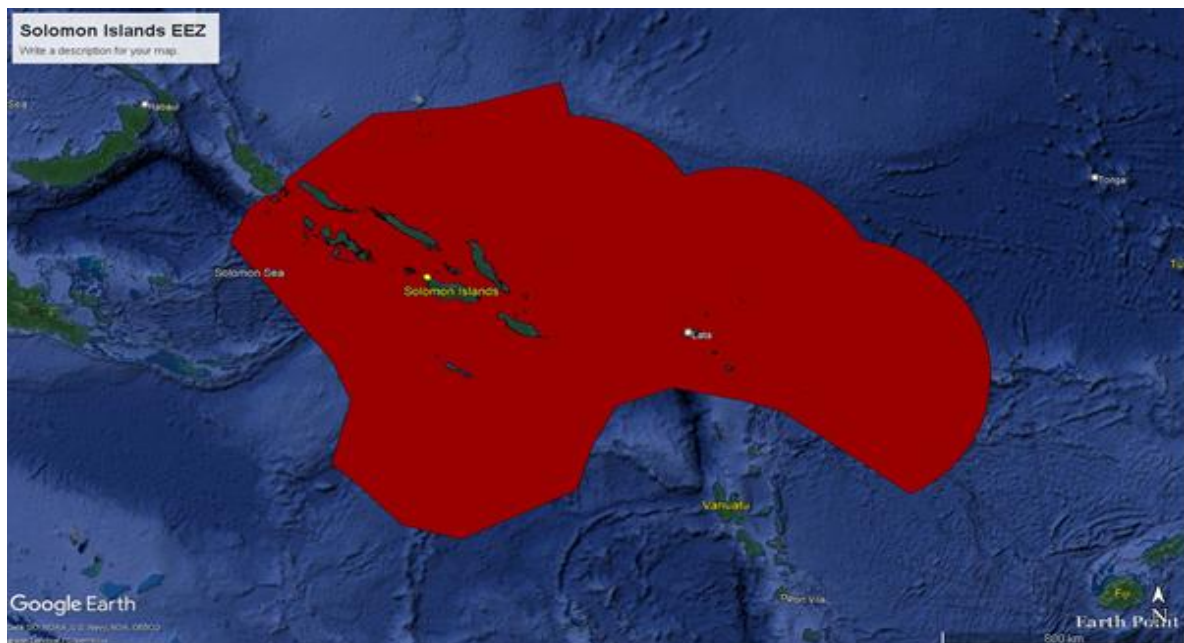


Figure 1 - Solomon Islands Economic Exclusive Zone (EEZ)

# ORGANISATION

## Stakeholders

6. The following organizations are responsible for implementing the NATPLAN:

6.1. **the Solomon Islands Maritime Authority (SIMA):**

SIMA is the lead organization responsible for the implementation of international and regional maritime agreements and applicable maritime laws under the SIMA Act 2018.

The SIMA Act 2018 gives power and function to SIMA to prevent marine pollution originating from vessels, and to coordinate the response to marine pollution incidents.

6.2. **The ministry responsible for shipping matters:**

The ministry responsible for shipping matters has the overall responsibility as Contracting Government under IMO Conventions.

6.3. **The ministry responsible for environment, disaster management and meteorology:**

The ministry responsible for environment, disaster management and meteorology has the overall responsibility for the prevention and response to pollution and disasters.

6.4. **The Environment and Conservation Division (ECD):**

ECD, under the ministry responsible for environment, is responsible for the protection, conservation and sustainable management of the use of the environment and natural resources of Solomon Islands.

ECD and SIMA collaborate to prevent and respond to marine pollution.

6.5. **The National Disaster Management Office (NDMO):**

NDMO, under the ministry responsible for disaster management, is responsible for coordinating arrangements and managing disasters and non-declared events under the National Disaster Management Plan (NDMP) 2018.

In case of marine pollution, whether it is declared a disaster or not, SIMA and NDMO have shared response coordination responsibilities as described in the section 'Category of marine pollution and response organisation'.

6.6. **The Royal Solomon Islands Police Force (RSIPF):**

RSIPF is leading law enforcement and national security and is committed to protecting life and property, providing assistance during emergencies and contributing to land and maritime search and rescue.

Due to its presence across Solomon Islands, the Maritime Police Force and RSIPF assets, RSIPF is one of the first responders to marine pollution and participate in on-scene coordination and response.

6.7. **The Solomon Islands Meteorological Service (SIMS):**

SIMS, under the ministry responsible for meteorology, is responsible for the effective and proper administration of meteorological services in Solomon Islands.

Upon request, provide weather forecasts, bulletins and warnings including information used to predict the drifting of objects, pollutants and other noxious substances,

- 6.8. **Local communities** play an essential role in the alert and can be involved in the response and recovery from marine pollution.
- 6.9. **Private stakeholders** must take all necessary measures to prevent pollution from their activities and respond to marine pollution:
  - 6.9.1. **the master and owner of a vessel or platform** as defined in section 2 of the 2011 Regulations that is in Solomon Islands waters or a Solomon Islands vessel or platform and who must apply international and national laws and standards applicable in Solomon Islands that includes marine spill prevention and contingency plans for their vessel and platform.
  - 6.9.2. **the owner and operator of a port, oil facility or chemical handling and storage facility** in Solomon Islands must apply international and national laws and standards applicable in Solomon Islands and have site-specific marine spill prevention and contingency plans for their facilities, consistent with the NATPLAN and any requirements applying under any law relating to disaster and emergency management.
  - 6.9.3. **any person** on the coastline of Solomon Islands or in Solomon Islands waters who must alert and report marine pollution from their or other activities.

## Category of marine pollution and response organisation

7. The 2011 Regulations require Director SIMA to develop, maintain and implement the NATPLAN. As per regulation 21, the NATPLAN conforms to all requirements contained in international instruments related to pollution prevention, coordination, cooperation and response, and liability and compensation.
8. The NATPLAN falls in the scope of the disaster management framework of Solomon Islands and is a Hazard Specific Contingency Plans under the National Disaster Management Plan 2018 (NDMP). In this scope, the NATPLAN is activated to respond to spills into the marine environment of all forms of pollutants, including oil, chemicals, and other hazardous materials:
  - 8.1. as standalone plan for marine pollution response not requiring activation of other NDMP arrangements, or
  - 8.2. in coordination with other NDMP arrangements to respond to aviation and maritime disasters or non-declared events.
9. The NATPLAN and the National Search and Rescue Plan (SARPLAN) have similar coordination arrangements.

10. The 2011 Regulations provides for various cases whether a pollution to the marine environment is from a vessel or not and whether the pollution incident is declared a state of disaster or not.
11. In this context, the response to a pollution of the marine environment is as follows:
  - 11.1. If a pollution of the marine environment arises from a vessel and the incident is not declared as a state of disaster:
    - 11.1.1. the response is coordinated by SIMA under the 2011 Regulations,
    - 11.1.2. the Marine Pollution Advisory Committee activates the NATPLAN,
    - 11.1.3. Director SIMA is designated by the Marine Pollution Advisory Committee as Incident Controller.
  - 11.2. If a pollution of the marine environment arises from a vessel and the incident is declared as a state of disaster:
    - 11.2.1. Disaster management arrangements are activated under the NDMP 2018,
    - 11.2.2. the response is coordinated by the NDMO under the National Disaster Council Act,
    - 11.2.3. the Marine Pollution Advisory Committee becomes the Advisory Committee of the National Disaster Council as prescribed by the 2011 Regulations section 20(5),
    - 11.2.4. the National Disaster Council can activate the NATPLAN and designate Director SIMA as Incident Controller for the response to the marine pollution from the vessel only.
  - 11.3. If pollution to the marine environment arises from a source which is not originated from any marine vessel (terrestrial source or airspace source) whether declared as a disaster or not:
    - 11.3.1. Disaster management arrangements are activated under the NDMP 2018,
    - 11.3.2. the response is coordinated by the NDMO under the National Disaster Council Act,
    - 11.3.3. in case of a declared state of disaster, the Marine Pollution Advisory Committee becomes the Advisory Committee of the National Disaster Council as prescribed by the 2011 Regulations section 20(5),
    - 11.3.4. the NATPLAN may be activated and Director SIMA designated as Incident Controller to assist the response to the pollution affecting the marine environment.

## Tiered Response Concept

12. NATPLAN is based on a tiered response concept.

### *Tier One (1)*

13. Spills that are within the response capability and resources of an individual port or oil terminal within Solomon Islands. These spills are covered by oil terminals or port specific response arrangements.

### *Tier Two (2)*

14. Spills that are within the capacity and resources of the Solomon Islands and that occur within the Solomon Islands waters. Such spills are covered by this plan.

### *Tier Three (3)*

15. Spills that surpass Solomon Islands' response capability and resources, impacting or posing a threat to both Solomon Islands and neighboring countries. This includes spills with the potential to cause extensive local or regional environmental damage and loss of resources.
16. Tier three (3) spills are covered by this NATPLAN and require activation of the Pacific Islands Regional Marine Spill Contingency Plan (PACPLAN) and other international mutual assistance agreements.

## Oversight responsibility

### *Director SIMA*

17. Director SIMA exercises the powers and functions as prescribed Shipping (Marine Pollution) Regulations 2011 ("the 2011 Regulations") which include the organization and preparedness for the response to marine pollution, the implementation of the NATPLAN and other required functions.

### *Marine Pollution Advisory Committee*

18. A Marine Pollution Advisory Committee has been established with membership and functions as prescribed by the 2011 Regulations:
  - 18.1. the Committee is coordinated by the Solomon Islands Maritime Authority (SIMA) which also assume the Committee's secretariat function,
  - 18.2. the members are appointed by the Minister,
  - 18.3. the Committee is one of the technical committees under SIMA and is integrated to SIMA's organization and management, and
  - 18.4. the Committee has its own terms of reference.

### *Solomon Islands Maritime Authority*

19. Under the SIMA Act 2018, the Shipping Act 1998 as amended and the 2011 Regulations, SIMA through its Director has the following powers and functions:
  - 19.1. the prevention of marine pollution originating from vessels and the coordination of the response to marine pollution incidents,

- 19.2. the enforcement of international, regional and national laws related to pollution prevention, preparedness, cooperation and response, and to liability and compensation,
- 19.3. appoint an inspector to investigate and report a marine pollution, On-Scene Commander (OSC) and any other deputy On-Scene-Commanders, and
- 19.4. develop, maintain and implement the NATPLAN, and arrange for the establishment and maintenance of a national marine pollution response equipment inventory.

#### *Operational responsibilities Maritime Rescue Coordination Centre*

- 20. The Maritime Rescue Coordination Centre Honiara (MRCCHON) is the SIMA's operational facility to coordinate SAR operations within Solomon Islands Search and Rescue Region, track all vessels in Solomon Islands and coordinate response to marine pollutions.
- 21. MRCCHON is located at SIMA's Office in Honiara at the position Lat. 09°25.81' S, Long. 159°57.47'E and is integrated into SIMA's organizational structure within the section Pollution and Safety Response of the Environment Protection and Safety Department. SIMA's Pollution and Safety Response section is responsible for preventing and responding to marine pollution.
- 22. The MRCCHON has the following capabilities:
  - 22.1. active 24/7 with persons having experience in response to marine pollution and have working knowledge of the English language,
  - 22.2. access paper and electronic navigational charts, SARMAP application, computers, high-speed internet, access to SIMA network, integrated information management database (SIMA E-gate) and tracking systems such as the Automatic Identification System (AIS) and the Long-Range Identification and Tracking (LRIT), and
  - 22.3. communication through GMDSS radiocommunication and telephone/email communication with other organizations.

#### *Incident Controller*

- 23. The Incident Controller is designated for marine pollution and assumes the operational responsibility for commanding the response and use all resources available under the 2011 Regulations.

#### *Polluter*

- 24. Under the SIMA Act 2018, the polluter pays principle applies which is that the costs of preventing, controlling, reducing and eliminating environmental harm should be borne by the persons who cause or knowingly permit it.
- 25. For that purpose, Director SIMA exercises his/her powers and functions under the 2011 Regulations to:
  - 25.1. notify the alleged polluter of their responsibility to cease immediately environmental harm and that any damage and action taken will be claimed directly to the polluter and their insurer,

- 25.2. instruct the polluter of any action deemed necessary to immediately cease environmental harm and clean and rehabilitate the environment as it was before the pollution incident,
- 25.3. prosecute the polluter that causes or knowingly permits environmental harm.

#### *Owner or operator of port, oil or chemical handling and storage facility*

26. Every owner and operator of a port, oil facility or chemical handling and storage facility must:
  - 26.1. prevent spills and pollution of the marine environment by all means possible,
  - 26.2. develop, maintain and implement site-specific marine spill prevention and contingency plans for their facilities, consistent with the NATPLAN and any requirements applying under any law relating to disaster and emergency management,
  - 26.3. submit the plans to Director SIMA for approval to become part of the NATPLAN,
  - 26.4. promptly report oil spill and marine pollution to SIMA directly or through authorities by all means possible,
  - 26.5. establish and maintaining appropriate stockpiles of the spill response equipment, adhering to specific roles and responsibilities in case of a spill, and
  - 26.6. actively participate in meetings related to the implementation of the NATPLAN and in any exercises and training activities.

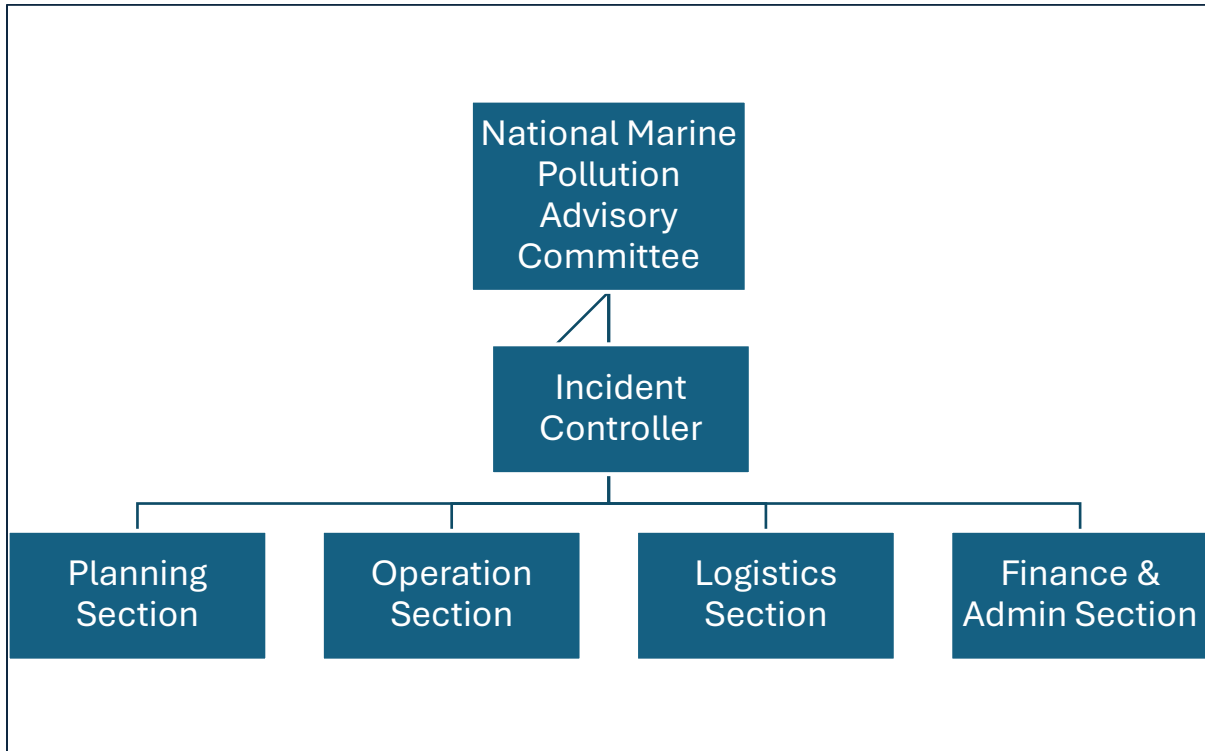
#### *External Assistance and technical support*

27. Depending on the response tier, external assistance and technical support can be provided as follows:
  - 27.1. disaster management arrangements and activation of the NDMP 2018 to support coordination and response to marine pollution,
  - 27.2. Pacific Islands Regional Marine Spill Contingency Plan (PACPLAN) is a framework for cooperative regional responses to major marine spills in the Pacific Islands region; for Solomon Islands, the PACPLAN is activated through the Secretariat of the Pacific Environment Programme (SPREP) for assistance by Australia through the Australian Maritime Safety Authority (AMSA) and the Australia Department of Foreign Affairs and Trade (DFAT),
  - 27.3. Australia Marine Oil Spill Centre (AMOSOC) is an Australian industry funded Oil Spill Response Organization providing all aspects of preparedness, planning and response, to government agencies, and to oil and shipping sector companies on a commercial basis.
  - 27.4. Oil Spill Response Limited (OSRL) is a commercial spill response industry-owned cooperative that can provide a wide range of technical services including technical advice, specialist personnel, equipment hire and maintenance, and oil spill response training; Solomon Islands is a Mobilizing Authority under an agreement between SPREP, New Zealand and OSRL,

- 27.5. Protection and Indemnity (P&I) Clubs insure approximately 90% of the world's shipping fleet, and are the insurer to take action and receive claims on behalf of the vessel polluter.

## INCIDENT RESPONSE

### Incident Control System



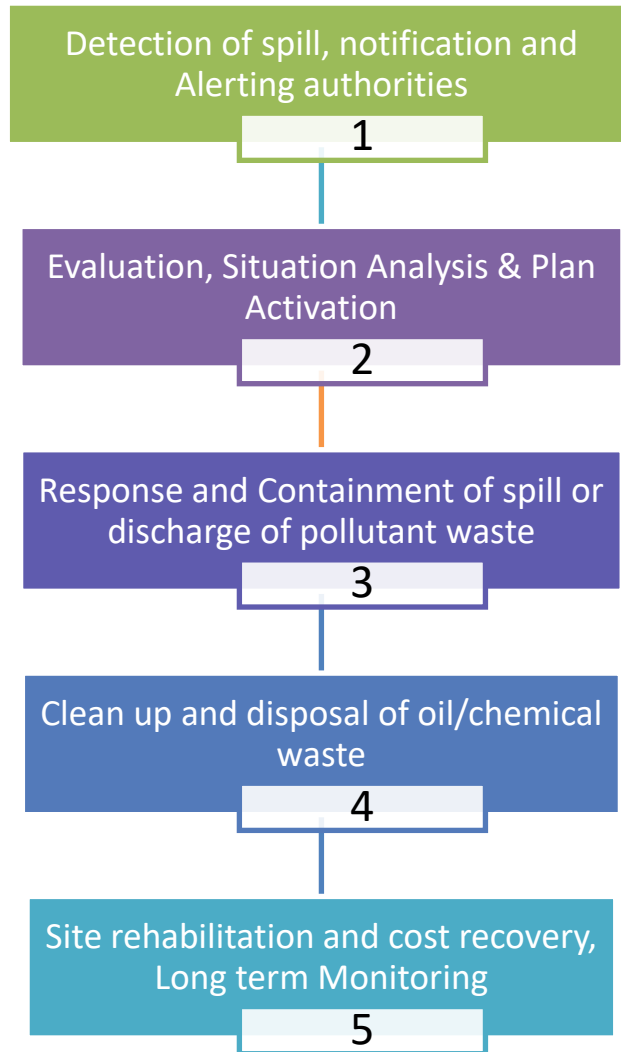
28. The Incident Control System is activated and installed at the MRCCHON and includes:
- 28.1. The Marine Pollution Advisory Committee oversees and provides support to the Incident Controller by mobilizing resources from its members' organisations.
  - 28.2. from Incident Controller (IC) who directs response efforts is the primary decision-making authority in relation to response activities including the use of resources under the NATPLAN and the 2011 Regulations.
  - 28.3. Incident Response Team (IRT) comprising:
    - 28.3.1. **Planning Section:** responsible for the provision of scientific and environmental information, the maintenance of incident information services, and the development of the Incident Action Plan.
    - 28.3.2. **Operation Section:** responsible for undertaking all response operations on the field.

- 28.3.3. **Logistics Section:** responsible for the provision and facilitating resources to sustain the response.
- 28.3.4. **Finance & Administration Section:** responsible for maintaining financial and administration records of the response activities.
- 28.4. Crisis management equipment and communication system of the MRCCHON.
- 29. Depending on the response tier, the IC decides to activate some or all of the IRT with functions as follows:
  - 29.1. **On-Scene Commander (OSC)** who is responsible for the Operation Section and the response coordination on the ground in liaison with local authorities,
  - 29.2. **Operation Officer (OO)** is responsible for the OSC and conducts all response operational activities on the field of the Incident Action Plan. He/she directs teams under his/her responsibility and coordinate response with community members and other organisations in the field.
  - 29.3. **Planning Officer (PO)** for the Planning Section to the IC and communicate with the OSC scientific and environmental information and the Incident Action Plan,
  - 29.4. **Logistics Officer (LO)** is responsible for Logistics Section and ensures that the IRT is provided with adequate resources to enable and sustain an effective response.
  - 29.5. **Finance & Administration Officer (FAO)** for the Finance & Administration Section and to the IC. He/she is responsible for all financial, administrative and legal activities including procurement, clerical and accounting recording and contracting of personnel, equipment and support resources.

## Incident Response

### *Response Phases*

- 30. There are five main phases to the overall process of responding to marine pollution.



*Detection of spill, notification and alerting authorities*

31. Whatever the response tier, any person or organisation responsible or witnessing a marine pollution must report the incident by all means possible to SIMA or any provincial or national authority by providing the following details:
  - 31.1. position of the pollution,
  - 31.2. type of pollution and substance,
  - 31.3. photos,
  - 31.4. source of pollution,
  - 31.5. contact of persons responsible or on the ground.
32. If the marine pollution is from a vessel, SIMA takes action as follows:
  - 32.1. conducts an analysis of the reported information,

- 32.2. informs the Marine Pollution Advisory Committee and implement its Procedure: Marine Pollution Response for what concerns the detection of spill, notification and alerting authorities,
33. If the marine pollution is from another source than a vessel, SIMA liaises with the NDMO to coordinate the response.

*Evaluation, Situation Analysis & Plan Activation*

34. To evaluate the report of marine pollution and its classification in one of the three tiers, the following table is used:

Tier	Criteria
<b>One</b>	<p>A report of a marine pollution meeting <b>any one or more</b> of the following criteria and coming from a credible source with low risk of information being incorrect or incomplete:</p> <ul style="list-style-type: none"> <li>• In Solomon Islands Waters EEZ outside Territorial Waters.</li> <li>• Reported as less than 1000 litres or a hectare (100mx100m) in extent.</li> <li>• Not adjacent to (within 12nm) of another jurisdiction, land, reef or other drying feature.</li> <li>• No impact on sensitive or valuable resources.</li> <li>• No hazardous and noxious substance (HNS) (chemical other than Oil) involved.</li> <li>• Not likely to trigger public or media interest.</li> </ul>
<b>Two</b>	<p>A report of an oil spill or incident meeting <b>any</b> of the following criteria:</p> <ul style="list-style-type: none"> <li>• In Solomon Islands EEZ or Territorial Waters, greater than 1000 litres or more than one hectare (100mx100m) in extent, but less than 10,000l or 10ha in extent, or</li> <li>• Adjacent to (within 12nm) land, reef or another drying feature, or</li> <li>• Likely to impact sensitive or valuable resources, or</li> <li>• May involve hazardous and noxious substance (HNS) /HAZMAT, or</li> <li>• Involves a potential navigational hazard (i.e. shipping containers, tank logs etc) or other reports of loss of cargo, or</li> <li>• Likely to trigger public or media interest.</li> </ul>
<b>Three</b>	<p>A report of an oil spill or incident meeting <b>any</b> of the following criteria:</p> <ul style="list-style-type: none"> <li>• In Solomon Islands waters greater than 10,000 litres or ten hectares (1000mx100m), or</li> <li>• May close a port for more than two days, or</li> <li>• Actual or likely impact on sensitive or valuable resources, or</li> <li>• Hazardous and noxious substance (HNS) confirmed, either confined to vessel, or released to marine, or</li> <li>• National or international public or media interest, or</li> </ul>

- Response may take weeks to months.

#### Tier 1

35. A Tier 1 marine pollution should be managed locally by the polluter using its site-specific response plan or its ship's equipment.
36. SIMA takes action as follows:
  - 36.1. conducts an analysis of the reported information,
  - 36.2. informs the Marine Pollution Advisory Committee for advice.

#### Tier 2

37. A Tier 2 marine pollution should be managed at the national level but will require activation of the Incident Control System and other disaster management arrangements.
38. If the marine pollution is from a vessel, SIMA takes action as follows:
  - 38.1. conducts an analysis of the reported information,
  - 38.2. informs the Marine Pollution Advisory Committee for activation of the NATPLAN and designation of Director SIMA as IC,
  - 38.3. implements its Procedure: Marine Pollution Response for what concerns the Evaluation, Situation Analysis & Plan Activation,
  - 38.4. the IC activates the Incident Control System at the MRCCHON with resources necessary for the marine pollution.
39. The IC activates the Incident Control System at the MRCCHON with resources necessary according to the Tier level and to sustain the response as needed.
40. If the marine pollution is from another source than a vessel, SIMA liaises with the NDMO to coordinate the response and upon request from NDMO applies its Procedure: Marine Pollution Response.
41. For Tier 2 marine pollution, SIMA issues an Initial Pollution Report (POLREP) using the standard format, and disseminates it to the Marine Pollution Advisory Committee, NDMO and other government agencies.

#### Tier 3

42. A Tier 3 marine pollution requires coordination of SIMA with NDMO and external assistance.
43. If the marine pollution is from a vessel, SIMA takes action by implementing its Procedure: Marine Pollution Response for what concerns the evaluation, situation analysis & plan activation.
44. The IC activates the Incident Control System at the MRCCHON with resources necessary for the marine pollution and coordinate with NDMO the request for external assistance and mobilization of resources.

45. For Tier 3 marine pollution, SIMA issues an Initial Pollution Report (POLREP) using the standard format, and disseminates it to the Marine Pollution Advisory Committee, NDMO and other government agencies, and external partners.

*Response and Containment of spill or discharge of pollutant waste*

Tier 1

46. For Tier 1 marine pollution, the polluter takes the necessary actions such as cleanup and monitoring, ensuring effective communication and reporting to SIMA.
47. Depending on the circumstances, SIMA will conduct a Preliminary Investigation into the cause of the marine pollution.
48. SIMA may report to Police and prosecute a marine pollution that appears to be voluntary or due to negligence.

Tier 2

49. For a Tier 2 marine pollution, the Incident Control System is activated including personnel from SIMA and other national agencies for deployment on the ground.
50. If the marine pollution is from a vessel, SIMA takes action as follows:
  - 50.1. implements its Procedure: Marine Pollution Response for what concerns the response and containment of spill or discharge of pollutant waste,
  - 50.2. mobilize resources from the National Pollution Fund (POLFUND) to sustain the marine pollution response.
51. If the marine pollution is from another source than a vessel, SIMA liaises with the NDMO to coordinate the response and upon request from NDMO applies its Procedure: Marine Pollution Response.
52. For Tier 2 marine pollution, SIMA issues a Situation Report (SITREP) at least every 12 hours, using the standard format, and disseminates it to the Marine Pollution Advisory Committee, NDMO and other government agencies.

Tier 3

53. A Tier 3 marine pollution is managed under this NATPLAN as a specific plan under the NMDP 2018 and requires coordination of SIMA with NDMO and external assistance.
54. If the marine pollution is from a vessel, SIMA takes action by implementing its Procedure: Marine Pollution Response for what concerns the response and containment of spill or discharge of pollutant waste.
55. The IC activates the full Incident Control System at the MRCCHON with resources necessary for the marine pollution and coordinates with NDMO the request for external assistance and mobilization of resources.
56. Decisions are made in coordination with the Disaster Management Council.

57. For Tier 3 marine pollution, SIMA issues a Situation Report (SITREP) at least every 12 hours, using the standard format, and disseminates it to the Marine Pollution Advisory Committee, NDMO and other government agencies.

*Clean up and disposal of oil/chemical waste*

Tier 1

58. For Tier 1 marine pollution, the polluter takes the necessary actions such as cleanup and disposal of waste at the satisfaction of SIMA., ensuring effective communication and reporting to SIMA.
59. SIMA takes action as follows:
  - 59.1. conducts a review of action taken and cleanup operation,
  - 59.2. close the response phase upon advice by the Marine Pollution Advisory Committee.

Tier 2

60. For a Tier 2 marine pollution, the Incident Control System is downsized and deactivated upon advice from the Marine Pollution Advisory Committee:
  - 60.1. SIMA maintains implementation of its Procedure: Marine Pollution Response for what concerns the cleanup and disposal of wastes,
  - 60.2. at the cost of the polluter, conducts or monitor a comprehensive environmental damage assessment,
  - 60.3. monitor the cleanup and disposal of wastes in collaboration with the Environment Division applying the agreed Shoreline Cleanup Assessment Technique (SCAT) and waste management plan.
61. For Tier 2 marine pollution, SIMA issues a Post-incident Report (POSTREP) and disseminates it to the Marine Pollution Advisory Committee, NDMO and other government agencies. The POSTREP should include an assessment of the response operation, documenting clean-up costs, assessing environmental and economic damages, detailing encountered problems, and making recommendations regarding the amendment or revision of the NATPLAN.

Tier 3

62. For a Tier 3 marine pollution, the Incident Control System is downsized and deactivated upon decision from the Disaster Management Council:
  - 62.1. SIMA maintains implementation its Procedure: Marine Pollution Response for what concerns the cleanup and disposal of wastes,
  - 62.2. at the cost of the polluter, conducts or monitor a comprehensive environmental damage assessment,
  - 62.3. monitor the cleanup and disposal of wastes in collaboration with the Environment Division applying the agreed SCAT and waste management plan.

63. For Tier 3 marine pollution, SIMA issues a Post-incident Report (POSTREP) and disseminates it to the Disaster Management Council, the Marine Pollution Advisory Committee, NDMO and other government agencies. POSTREP should include an assessment of the response operation, documenting clean-up costs, assessing environmental and economic damages, detailing encountered problems, and making recommendations regarding the amendment or revision of the NATPLAN.

#### *Site rehabilitation and cost recovery, Long term Monitoring*

64. For Tier 2 or 3 marine pollution, SIMA in collaboration with NDMO and the Environment Division:
  - 64.1. at the cost of the polluter, monitor site rehabilitation by the polluter and long-term assessment of the environmental recovery and any persistent impacts.
  - 64.2. using the results of inspections and investigations, SIMA in collaboration with the Environment Division claim directly to the insurer compensation for the damage resulting from the marine pollution.

#### Communication

65. Internal communication is communication among the IRT and between SIMA and other responders, and include:
  - 65.1. mobile telephony,
  - 65.2. email,
  - 65.3. face-to-face meetings at the MRCCHON.
66. External communication is communication between the IRT or SIMA with the vessels or organisation involved in the marine pollution, and include:
  - 66.1. VHF and MF/HF marine radio,
  - 66.2. mobile telephony,
  - 66.3. email,
  - 66.4. letter,
  - 66.5. face-to-face meetings at the office of SIMA.
67. Public communication to press, social media and other rests with Director SIMA for incident response under the NATPLAN and NDMO for incident response under the NDMP 2018.

## EQUIPMENT AND TRAINING CAPACITY

### Equipment

68. The national equipment inventory is prescribed by the 2011 Regulations and provided in Appendix 4.

## Training, Drills & Exercises

69. Training marine pollution response personnel is essential so that they fully understand their responsibilities and are capable of performing assigned response tasks and duties in a safe, efficient and environmentally sensitive manner.

## Drill & Exercises

70. Drills are conducted by SIMA on a quarterly basis as tabletop exercises to test the NATPLAN and its procedures. Drills can be internal to SIMA or involved external stakeholders.
71. Exercises serve to evaluate, on annual basis, as tabletop or full-scale exercise, the thoroughness and effectiveness of the response components of the NATPLAN by testing under simulated conditions important elements of response capability such as:
  - 71.1. practicality (structure and organization),
  - 71.2. communications,
  - 71.3. equipment capability and response times,
  - 71.4. adequacy of action plan, and
  - 71.5. public, industry and media relations.
72. Types of exercises to be considered include:
  - 72.1. deployment of selected equipment (as in training exercises),
  - 72.2. call-out of personnel who would be involved or contacted during a spill event (including other government department officers, Solomon Islands,
  - 72.3. Port Authority personnel, oil industry company personnel, etc.), and
  - 72.4. full scale exercises.

## LEGISLATION, ENFORCEMENT AND PROSECUTIONS

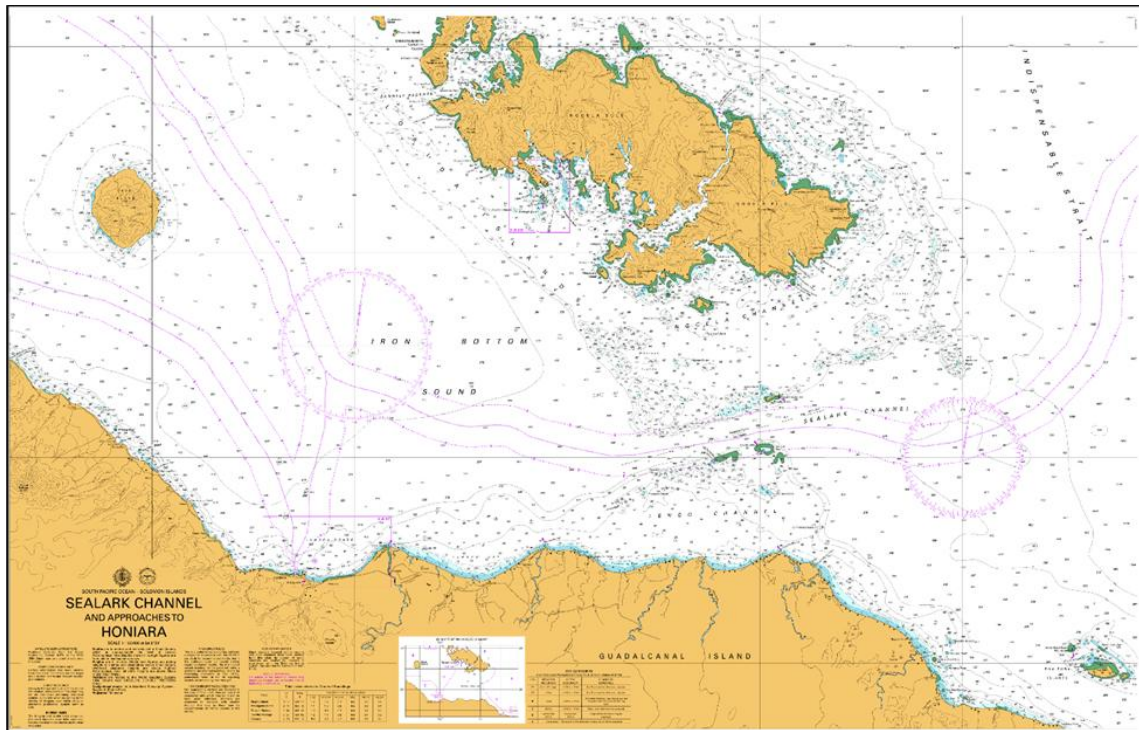
73. In Solomon Islands, the discharge of harmful substances, pollutants and wastes is prohibited into the marine environment unless measures are taken:
  - 73.1. the Shipping Act 1998 as amended,
  - 73.2. the Environment Act,
  - 73.3. the Fisheries Act, and
  - 73.4. the Shipping (Marine Pollution) Regulations 2011.
74. Prosecution of discharge of harmful substances, pollutants and waste is conducted under these laws by the responsible agency in collaboration with the Office of the Director of Public Prosecution (ODPP).

## APPROVAL, CONTROL AND REVISION OF THE PLAN

75. The NATPLAN is approved by the Minister responsible for shipping matters as prescribed by the 2011 Regulations after consultation with all stakeholders involved in its implementation.
76. SIMA is responsible for maintaining the NATPLAN and control versions and copies of the NATPLAN.
77. Amendments to the NATPLAN are made by SIMA in consultation with all stakeholders and approval by the Marine Pollution Advisory Committee.
78. Upon advice by the Marine Pollution Advisory Committee, the amendments are made without approval by the minister; to evaluate the need for ministerial approval, the Marine Pollution Advisory is guided by the following criteria:
  - 78.1. changes affect the organization of marine pollution response,
  - 78.2. the role of one or several stakeholders is changed,
  - 78.3.
79. Amendments to appendices do not require ministerial approval given that they are general information and guidance only.

# Appendix 1: SOLOMON ISLANDS NAVIGATIONAL CHARTS

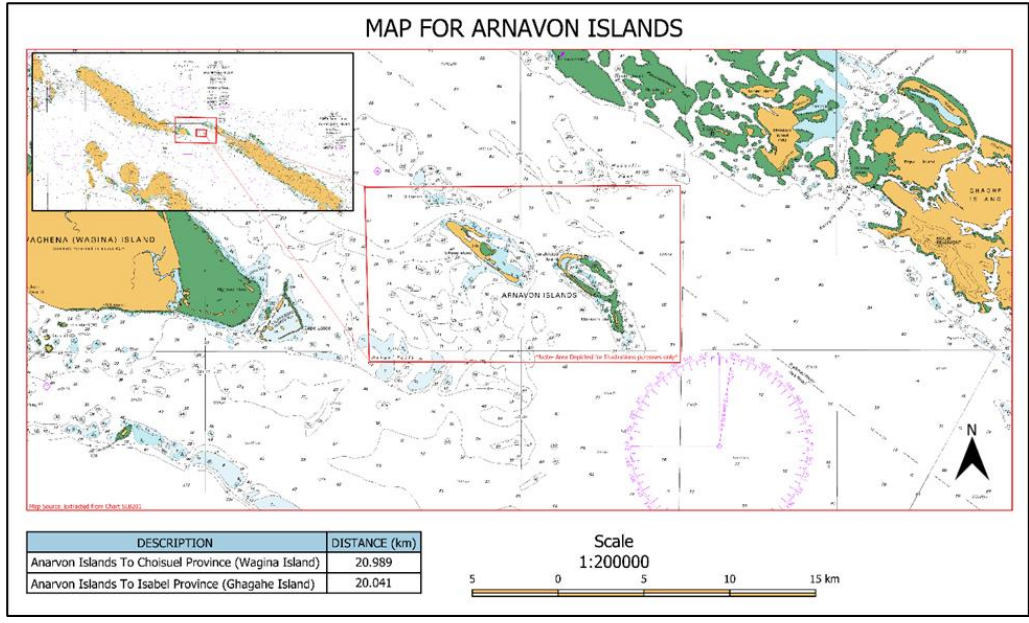
## 1.1 Heavy Traffic Density Area



**Figure 4:** Nautical chart SLB 201 showing Savo separate scheme and sea lark channel between Guadalcanal Island and central islands.

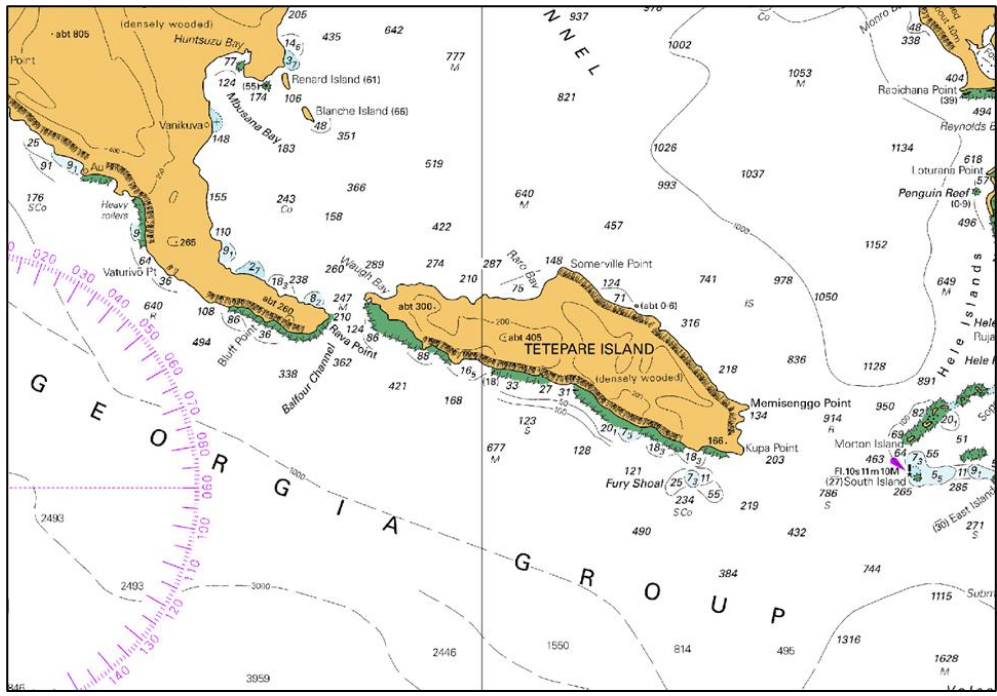
## 1.2 Sensitive Resources Areas

### 1.2.1 Arnavon Island



**Figure 5:** Arnavon Island is a marine protected area that has shared custody by locals from south Choiseul Wagina and North Isabel Kia.

### 1.2.2 Rendova Island, Tetepare Island



**Figure 6:** Map partially showing Rendova Island and Tetepare Island (A conservation jewel of the South Pacific situated in the Western Province of the Solomon Islands).

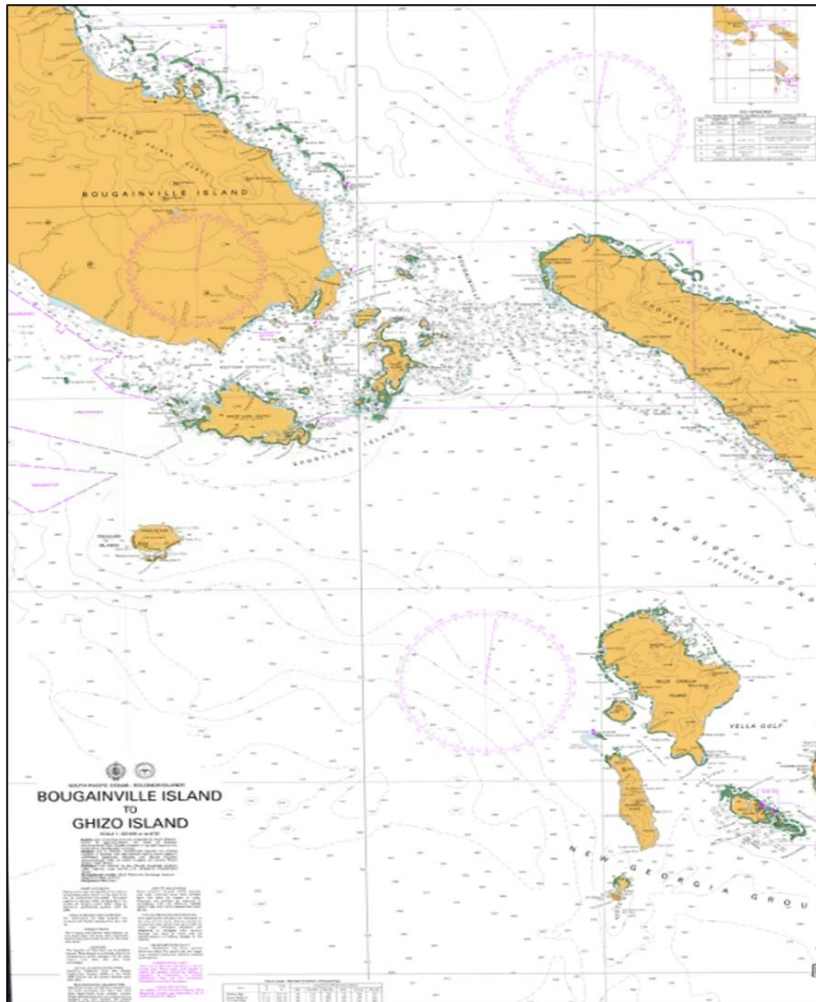
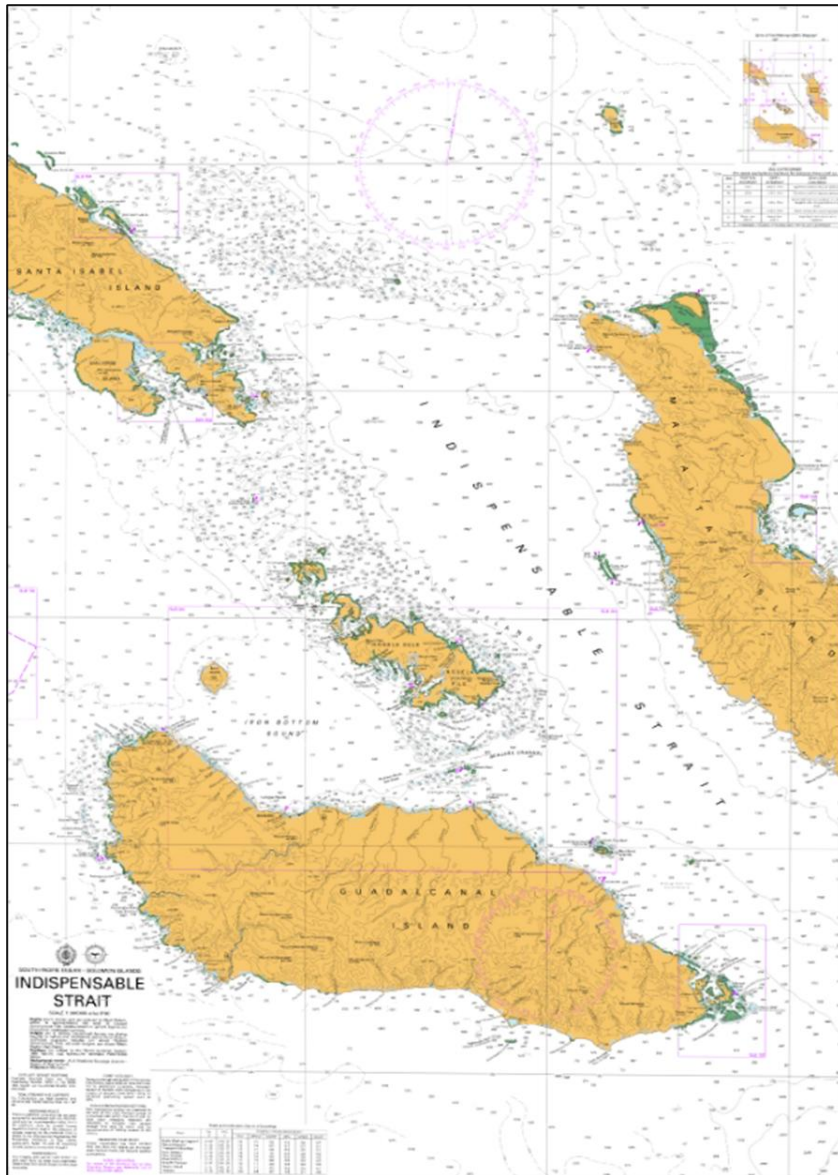


Figure 7: Nautical Chart SLB 301 showing the Map of Bougainville Island to Gizo Island.



**Figure 8:** Nautical Chart SLB 304 showing the Map of Indispensable Strait between Central Islands and Malaita Island.

## Appendix 2: EMERGENCY CONTACT DETAILS

Appendix 2 shows the Emergency Contact details of Organizations, Ministries, Stakeholders, Industries and External Stakeholders.

Solomon Islands Maritime Authority (SIMA)

Tel : (677) 21609/977; FAX: (677) 23798

National Disaster Management Office (NDMO)

Tel: (677) 27836/955; FAX: (677) 24293

Royal Solomon Islands Police Force (RSIPF)

Tel: (677) 22999/22666/999

Organisation/Department	Phone	Fax	Email
Solomon Islands Maritime Authority – Maritime Rescue Coordination Centre	21535, 27685, 21609 21535 Ext 217	23798	<a href="mailto:thierry.nervale@sim.gov.sb">thierry.nervale@sim.gov.sb</a> <a href="mailto:rachel.bareanita@sim.gov.sb">rachel.bareanita@sim.gov.sb</a> <a href="mailto:agnes.gaotee@sim.gov.sb">agnes.gaotee@sim.gov.sb</a> <a href="mailto:mrcc@solomon.com.sb">mrcc@solomon.com.sb</a>
Solomon Islands Ports Authority General Manager Harbour master – Honiara Port Manager/Harbour master-Noro Ports Security	22646  61247  61041 22582 (24hrs)	  23994 24643 61182	<a href="mailto:grausi@sipa.com.sb">grausi@sipa.com.sb</a> <a href="mailto:sipa.com.sb">sipa.com.sb</a> <a href="mailto:pbiliki@sipa.com.sb">pbiliki@sipa.com.sb</a>  <a href="mailto:akilimani@sipa.com.sb">akilimani@sipa.com.sb</a> <a href="mailto:csade@sipa.com.sb">csade@sipa.com.sb</a>
Permanent Secretary, Ministry of Environment, Climate Change, Disaster Management & Meteorology	27751, 23031, 27936, 27937	28054	<a href="mailto:SSulu@mecdm.gov.sb">SSulu@mecdm.gov.sb</a> <a href="mailto:TSiota@mecdm.gov.sb">TSiota@mecdm.gov.sb</a> <a href="mailto:DKereseka@mecdm.gov.sb">DKereseka@mecdm.gov.sb</a>
Director, National Disaster Management Office	27936/27937 955 toll free line	24293	<a href="mailto:JTafiariki@ndmo.gov.sb">JTafiariki@ndmo.gov.sb</a>
Permanent Secretary, Ministry of Fisheries & Marine Resources	28604	-	<a href="mailto:cramofafia@fisheries.gov.sb">cramofafia@fisheries.gov.sb</a> <a href="mailto:ehoniwala@fisheries.gov.sb">ehoniwala@fisheries.gov.sb</a>
Manager, Markwarth Oil Ltd	20014		<a href="mailto:jimblanking@solomon.com.sb">jimblanking@solomon.com.sb</a>
Commissioner of Police	28289	20616	<a href="mailto:rsipfcom@solomon.com.sb">rsipfcom@solomon.com.sb</a>

Royal Solomon Islands Police Force Deputy Commissioner of Police Operation	Toll Free 999 (24hrs)  25266		
Police Maritime Unit Director Maritime Director National Response Unit	22564 22563 28327 20166	28423	<a href="mailto:Willie.Kelomae@rsipf.gov.sb">Willie.Kelomae@rsipf.gov.sb</a> <a href="mailto:Nevol.Soko@rsipf.gov.sb">Nevol.Soko@rsipf.gov.sb</a>
Solomon Islands Fire and Rescue Services	24476/23800	22874	<a href="mailto:solomonislandfirerescue@gmail.com">solomonislandfirerescue@gmail.com</a>
South Pacific Oil	21838/21225	61078	<a href="mailto:ckorowa@spo.com.sb">ckorowa@spo.com.sb</a>
Customs and Excise Department	22670		<a href="mailto:beresi@yahoo.com">beresi@yahoo.com</a>
Immigration Department	22179		
Quarantine Department	21294		<a href="mailto:srarahoa@biosecurity.gov.sb">srarahoa@biosecurity.gov.sb</a>
Ministry of Health and Medical Services	20830/22376/2 3650		<a href="mailto:Sioalison7@gmail.com">Sioalison7@gmail.com</a>
Solomon Islands Maritime Transport Association	7440313		<a href="mailto:peace.takeli@gmail.com">peace.takeli@gmail.com</a>
SPREP, SAMOA	+685 21929		<a href="mailto:anthonyt@sprep.org">anthonyt@sprep.org</a>
AUSTRALIA: Rescue Coordination Centre	+61 2 62306811		<a href="mailto:rccaus@amsa.gov.au">rccaus@amsa.gov.au</a>

Maritime Rescue Coordination Centre (MRCC), SIMA

<b>Personnel</b>	<b>Phone</b>	<b>Toll Free Line</b>
<b>Rescue Coordination Centre – 24 Hours</b>	<b>(677) 21609</b>	<b>977</b>

Environment Protection and Safety Department ), SIMA

<b>Personnel</b>	<b>Phone</b>	<b>Toll Free Line</b>	<b>Mobile</b>
Manager, EPS, Rachel Bare-Anita	(677) 21535 Ext 217		(677) 8437041
Response Officers – Bob Popona Ridol Ally Sanau Ernest Legumana William Aubasi Francis Pita Diana Vasula Floyd Koroa Robert Clifford Pitisopa	(677) 21609, 27685	977	

**Executive, SIMA**

<b>Personnel</b>	<b>Phone</b>		<b>Mobile</b>
Director, Thierry Nervale	(677) 28157		(677) 7569473
Deputy Director, Agnes Gaote'e	677 21535		(677) 8482307
Manager, EPS, Rachel Bare-Anita	677 21535		(677) 8437041
Principal Officer Pollution & Safety Response	677 21609		(677) 7224524
Technical Officer Pollution and Safety Response	677 21609		(677) 7230298

Bob Papona Ridol			
Senior Officer Pollution and Safety Response Ernest Legumana	677 21609		(677)7424892
Senior Officer Vessel Tracking William Aubasi	677 21609		(677) 7420128

### **Solomon Islands Port Authority**

<b>Personnel</b>	<b>Phone</b>	<b>Facsimile</b>
Honiara Port Manager/ Harbour master	(677) 22646	(677) 23994
Noro Port Manager/ Harbour master	(677) 61041	(677) 61996

### **Oil Industry and Exploration**

<b>Personnel</b>	<b>Phone</b>	<b>Facsimile</b>
Manager, Marine Operations, Oil Company, Honiara	(677) 21838	(677) 24125
Operations Manager, SPO Oil Company, Honiara	(677) 22374	(677) 21708
Operations Manager Oil Company, Noro	(677) 22899	(677) 22895

### **Government Department & Semi Govt. Bodies**

<b>Personnel</b>	<b>Phone</b>	<b>Facsimile</b>
Permanent Secretary – Ministry of Environment, Climate Change, Disaster Management & Meteorology	(677) 28049	(677) 28054

Director National Disaster Management Office	(677) 27836, 27937	(677) 27060
Manager, Surveillance Ministry of Fisheries and Marine Resources	(677) 39143	(677) 39143
Ministry of Health	(677) 23800	(677) 20085
Director, Marine Operations Solomon Maritime Police	(677) 22563	(677)28327
Solomon Islands Fire Services	(677) 23304/23376	(677) 28874
Customs(MOF) and Quarantine Division of Ministry of Agriculture	(677) 22359 (677) 21259	(677) 21069 (677) 24657

### Shipping Industry

Personnel	Phone	Facsimile
Maritime Transport Association	(677) 7440313	(677)
Franjti	(677) 23200	(677)
IDC	(677) 22626	(677)
Fair Trade Shipping	(677)38399	(677)

### Australian Maritime Safety Administration

Rescue Coordination Centre (RCC), Australia

Personnel	Phone	Facsimile
RCC 24 Hours	05 612 6230 6811	05 612 6230 6868

### SPREP Samoa

Personnel	Phone	Facsimile
-----------	-------	-----------

Marine Pollution Adviser	05 685 21929	05 685 20231
--------------------------	--------------	--------------

# Appendix 3: POLLUTION REPORT (POLREP) FORM & SITUATION REPORT (SITREP) FORM



## POLLUTION REPORT (POLREP)

### Marine Pollution Response

Information collected through direct reporting to MRCC or onsite deployment assessment

Activity	Input	Comment
Duty officer		
Date and Time of POLREP		
<b>Date and Time of Incident</b>		
Location of Incident (Lat & Long)		
Source of Incident		
<b>Description of Location</b>		
<b>Nature of Incident</b>		
<b>Visual appearance and extend of pollution (estimate area and quantity if possible)</b>		
Direction and drift of pollution		
Wind speed and wind direction		
Sea State		
Tide		
Events since last Polrep		
<b>SMC/IC Authorization</b>		

## Appendix 4: NATIONAL OIL SPILL EQUIPMENT INVENTORY

### NATIONAL OIL SPILL EQUIPMENT INVENTORY GUIDE

<i>OWNER:</i> SOUTH PACIFIC OIL LIMITED PO BOX 897 HONIARA SOLOMON ISLAND			STORAGE LOCATION HONIARA	CONTACT DETAILS
NO:OF ITEM	ITEMS	TYPE/DESCRIPTION S	QTY	COMMENTS/REMARKS
	Oil Spill Mandated Document	SOP		Yes
1	Diesel hydraulic Power Pack	Yanmer 4hp&20lt	1	All Equipment are valid ready for use in any Oil Spill Emergency
2	Skimmer	Lamor minimaxx12	1	
3	Skimmer	Diesel hydraulic power pack	1	
4	Hydraulic hose	15m	1	
5	Hose floats	floaters	10	
6	Plastics sheets	rolls	5	
7	Plastic bags	Qty75/roll	7	
8	Suction hose	15m'50mm	2	
9	Lay float hose	15m"50mm	1	
10	Suction hose	Beach boom	1	
11	Discharge hose and Tiller	50mm beach boom	1	
12	Fire Extingusher	9kg DCP	1	
13	DW600B Boom	20m	6	
14	Pack absorbent boom	4"3m	16	
15	Beach boom		3	
16	Fastank	10,000 litres	2	
17	Towing bridles		4	

18	Pacific sea boom	100m,type14/15 with ASTM Connector	2	
19	Steel boom reel	Galvanised	2	
20	Road trailer		Nil	Need to get one
21	Oil tanks	Hydraulic	1	
22	Buckets	Beach boom buckets	5	
23	Tuff tubs		3	
24	Power cables	Extension leads	2	
25	Oil absorbent granules	Bags	5	
26	Absorbent pads	packs	42	Minimum requirement is 50 so additional 8 is needed
27	Water pump	Beach boom	1	
28	Air blower and fillers	Beach boom	2	
29	Cobrac coils absorbent	Beach boom	2	
30	Braid rope	100m"12mm	2	
31	Set tools and spare	Box	1	
32	Knives	Marine	5	
33	Broom	Beach broom	2	
34	Matics	N/A	2	
35	Shovels	round	2	
36	Shovels	squares	2	
37	Forks		2	
38	Axes		2	
39	Anchor sets		10	
40	Mattocks		2	
41	Vice Bench		1	

**FIRST AID KITS**

ITEM CODE	ITEM DESCRIPTION	QTY	COMMENTS/REMARKS
KE00G	Two Tray Portable Green box	1	Ready for use
BDCF01	Conforming Bandage	2	
BDCF02	Conforming Bandage 2.5x10	2	
BDCF03	Conforming Bandage 7.5cmx1.5cm	2	
BDCF04	Conforming Bandage 10cmx1.5cm	1	
BDCF05	Conforming Bandage 15cmx1.5cm	1	

BDWB01	Hospital Crepe Bandage 2.5cmx1.5cm	2	
BDWB03	Hospital crepe Bandage 7.5cmx		
BDWB04	Heavy Crepe Bandage 10cmx1.5cm	2	
BDTC11	Calico Triangular Bandage 155x110	2	
BDTN11	Triangular Bandage Non-Woven 110	3	
CD1010	Combined Dressing-10cm x 10cm	2	
CD2010	Combined Dressing-10cm x 20cm	2	
BDWD13	No 13. Wound Dressing	1	
BDWD14	No 14. Wound Dressing	1	
BDWD15	No 15. Wound Dressing	1	
NAL001	Lite Dressing 7.5 x 5cm	1	
NAL003	Lite Dressing 7.5 x 10cm	1	
NAL004	Lite Dressing 7.5 x 20cm	1	
NAD001	Non Adherent Dressing 5cm x 5cm	1	
SWBDPK	Basic Dressing Pack	1	
SW0502	Gauze swabs 5cm x 5cm 2 pack	2	
SWCA10	Cotton Applicators-100 pack	1	
TAZT25	Zinc strapping tape-2.5cm x 5cm	1	
BAP050	Plastic Dressing Strips 50 Pack	1	
BAF701	Dressing roll 7.5cm x1m	1	
BABF10	Butterfly Closures x 10 box	1	
TAF312	Tape Wrapped 1.25cm x 9.1m	1	
EPXLXJ	Eye Pad sterile single use	1	
SOD115	Sodium chloride 15ml Steri-tube	5	
EYEWPR	Eye wipe rubber ends	1	
EYEBT11	Eye Bath Cup	1	
SAVRA550	Antiseptic spray 50ml	1	
SGB355	Burn Gel Sachet 3.5ml	6	
RMLWC05	Key-ring CPR Mask	1	
USI35B	Scissors-surgical-125mm-sharp Blunt	1	
	MARINE EMERGENCY RESPONSE SPILL EQUIPMENT		
USF125	Tweezers 125mm fine point	1	
UTSP12	Safety pins-12 pack	1	
UTSPL5	5 splinter probes		
NKID10	Kinney dish 10 plastic	1	
HCP5000	Instant ice pack large	1	
NSOO2L	Sharps Container Small-10 plastic	1	
BDTBLA	Survival Thermal blanket	1	

SWAW10PK	Alcohol Wipes 10 pack	1	
SNOTED	Note book	1	
SDBIRO	Biro	1	
FANBA6	First Aids Notes instructions	1	
EMERGENCY RESPONSE BOAT TRAILER			
Item NO	Compliances		
1	Trailer	Yes	In working Condition
2	Boat	Yes	In working Condition

<b>OWNER</b> Origin Energy PO BOX Honiara Solomon Islands	STORAGE LOCATIO N	Contact Details
	Ranandi Honiara	Contact Person:Graunt Hou Phone:21833 Mobile:7494762 Email:Granthou@originegy.com.sb

NO:	ITEMS	TYPES AND DECRPTION	QTY	Comments
1	Oil Response Mandated Document	No		Origin Eney do not have any Oil Spill Response Mandated Document

#### Oil Spill Equipment

1	Hardware tools	Welding tools and Building Tools		
2	Power Pack Hydrostatic pump	Dave Pump	1	
3	Anchor Kits		1	
4	Portable Generator set	Kipor 3.5 kva	1	
5	Air Blower	Makita Brand	1	
6				

#### TRANSPORT MOBILITY

1	Out Board Motor	Yamaha 15hp	1	
2	Vichles	3.5 ton trucks,Hilux,Buses and Land Cruzers	15	

3	Forklift	Foton	1	
TRAIN PERSONAL				
1	Trained Personal For Oil Spill	NO		
2	Chemical	NO		

<i>OWNE</i> Ministry Of Environment <i>R:</i> PO BOX 21 Honiara Solomon Island			Contact Details:  Contact Person: Debra Kereseka Phone: 23031 Email: DKereseka@mecdm.gov.sb
NO:	ITEMS	TYPES AND DESCRIPTIONS	COMMENTS AND REMARKS
1	Mandated Document	No	Ministry of Environment only have and provide Trained and experience personal on oil spill and chemicals events
2	Auxiliary tool	No	
3	Oil spill equipment	No	
Train Personal			
1	Oil Spill	Names: Allen Kisi Michael Suinao Enock Faabas Debra Kereseka Rosemary Apa	Trained Personal of Ministry of Environment are involved in Rennel oil spill
2	Chemical	Names: Michael Suinao Enock Faabas Debra Kereseka Rosemary Apa	Those Trained personal had been involved in Tuaruhu illegal chemical waste disposal events

<i>OWNER:</i>		Solomon Island Ports Authority PO BOX Honiara	CONTACT Details Percy Biliki Phone:22646	
NO:	Item	Type/Description	QTY	Remarks/Comments
1	Oil Spill Mandated Document	NO		SIPA Pollution Prevention and Marine Safety Unit is just established currently they doing awareness to Domestic ships and doing harbour patrolling
2	Oil Spill Equipment	NO		
3	Transport	23 feet Aluminium Speed Boat	1	
4	Train Personal	6 Harbour Patrol officers	6	

<b>OWNER:</b>		Marthwarth Oil Limited PO BOX 561 HONIARA SOLOMON ISLANDS	Contact Details:	
			Contact Person:Robert Ramo Mobile:7589825 Phone:22374 Email:	
NO	ITEMS	TYPES/DESCRIPTION	QTY	REMARKS AND COMMENTS
	Oil Spill Mandated Documents			
<b>Oil Spill Equipment</b>				
NO	ITEMS	TYPE/DESCRIPTIONS		COMMENTS/REMARKS
1	Diesel Hydraulic Power	Yanmer 4hp&20lt	1	ALL EQUIPMENT IN GOOD CONDITION READY FOR USE IN EMERGENCY RESPONSES
2	Skimmer	Lamor minimax12	1	
3	Skimmer	Diesel hydraulic power pack	1	
4	Hydraulic Hose	15m	1	
5	Hose floates	floaters	10	
6	Plastic sheets	rolls	5	
7	Plastic Bags	Qty75/ril	7	
8	Suction hose	15m”50mm	2	
9	Lay flat hose	15m”50mm	1	
10	Suction hose	Beach boom	1	
11	Discharge hose and filler	50mm beach boom	1	
12	Fire Extinguisher	9KG DCP	1	
13	DW600B boom	20M	6	
14	Pack Absorbent booms	4/3	20	
15	Beach boom		3	
16	Fastank	10,000LT	2	
17	Owing bridles		4	
18	Pacific sea boom	100m,type14/15 with connectors	2	
19	Steel boom reel	Galvanized	1	
20	Road trailer	Galvanized, Supplied with spare wheels	1	
21	Oil tank	Hydraulic	1	
22	Buckets	Beach boom buckets	5	

23	Tuff tubs		2	
24	Power cables	Extension lead	2	
25	Oil absorbents granules	Bags	5	
26	Absorbent pads	Packs	42	
27	Water pump	Beach boom	1	
28	Air blower and filler	Beach boom	2	
29	Cabrac coils absorbents		2	
30	Braid rope	100m”12mm	2	
31	Set tools and spare	box	5	
32	knives	Marine	2	
33	Broom	Beach broom	2	
34	Matics	N/a	2	
35	Shovels	Round	2	
36	Shovels	Square	2	
37	Forks		2	
38	Axes		2	
39	Anchor sets		10	
40	Mattock		2	
41	Vice Bench		1	
42	First Aid Kits		1	Set of first aid kits for oil spill Emergency responses
TRANSPORT				
1	Trailer		1	Functioning well in good condition ready to use in oil spill incident.
2	Boat			

	Names Of Company and Ministry			
1	Silentworld shipping and Fuel Depot			
2	Leroy Wharf			
3	Ministry of Fisheries			
4	Melanesian Energy Gizo			
5	Axion Mining			