



**GMN** | The Global  
MTCC Network  
A global network for energy-efficient shipping



**MTCC PACIFIC**  
Maritime Technology Cooperation Centre

## MARITIME TECHNOLOGY COOPERATION CENTRE – PACIFIC (MTCC-PACIFIC)

**CAPACITY BUILDING FOR CLIMATE MITIGATION IN THE  
MARITIME SHIPPING INDUSTRY**  
THE GLOBAL MTCC NETWORK (GMN) PROJECT

# MTCC- Pacific Update

*Presenter: M. A. Zullah*  
**Maritime Energy & Safety Adviser**  
[zullahm@spc.int](mailto:zullahm@spc.int)



Pacific  
Community  
Communauté  
du Pacifique

HOST INSTITUTIONS  
OF MTCC-PACIFIC







**SPREP**  
Secretariat of the Pacific Regional  
Environment Programme

The Global MTCC Network (GMN) project is funded by the European Union and implemented by the IMO.

# IN-COUNTRY TECHNICAL ASSISTANCE

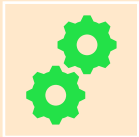
National Workshops : Information and capacity building on EE measures/ operations, management and data collection.

								
Participants	27	17	33	18	17	32	33	17
Ship Operators	6	4	5	1	1	9	1	1
Female = 50								
DC	2	1	3	1	1	1	-	-
SEEMP	9	5	8	1	1	11	4	-
Pilot Project			Solar		Solar			

Port Energy Audits: Identify energy reduction opportunities and guidance on implementation



Private sector engagement critical



Technological & operational measures adapted to individual vessels



Partnership & Technical Cooperation

Ports Energy Audit

Lev. 1

Lev. 2

Lev. 1

Lev. 1

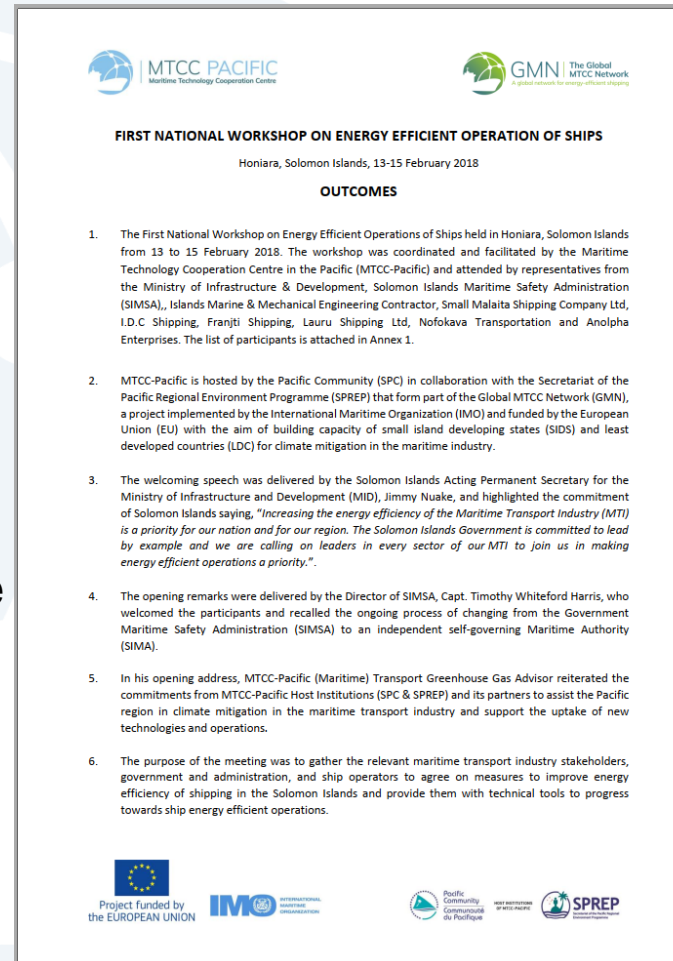
Lev. 1

Lev. 1

Lev. 1

# NATIONAL WORKSHOPS

- Overall good attendance in NW
- Group discussion on issues relating SEEO
- Discussion on CC, GHGE and P/SEM measures
- Interactive knowledge transfer on EEDI, EEOI, SEEMP, and PIDSS
- Interactive sessions on IMO GMN technology transfer and technical cooperation- SEET
  - PBCF, LED, WHRS, SG, and PV
- Discussion on the climate mitigation in the maritime industry: To reduce fuel oil consumption and GHG emission.
  - What are the drivers?
  - What are the needs?
  - What are the barriers?
  - What are the relevant actions?



7. Agreed to take relevant action to mitigate greenhouse gas emissions (GHGE) and create awareness amongst the ship owners/operators in Solomon Islands on the benefits of ship energy efficient ship operations (SEEO) toward reduction of fuel oil consumption and reduction of GHGE.
8. Recognize the drivers, needs, barriers and relevant actions stated in Annex 2 that include:
  - i. Capacity Building (C-B) e.g. HR Development and awareness of training opportunities;
  - ii. Improve profitability of ships, reliability and efficiency of domestic shipping;
  - iii. Legislation, regulations and standards for domestic ships including safety, training, pollution prevention and efficiency;
  - iv. Acknowledging challenges of the Pacific by the international community;
  - v. Non-signatory to International Conventions;
  - vi. Availability of cost affordable spare parts and technologies;
  - vii. Insufficient specialized staff;
  - viii. Inconsistent purchase of vessels under grant; and
  - ix. Cost of Energy.
9. Agreed to participate and be involved in MTCC-Pacific pilot-projects on energy efficient operations of ships and data collection that will assist in implementing immediate actions adapted to Solomon Islands registered vessels and ports.
10. Agreed to collect and share relevant data on fuel oil consumption through an Agreement between SIMSA and MTCC-Pacific and request MTCC-Pacific to provide templates and assist in collection and reporting, ensuring confidentiality and accessibility of information.
11. Recognized existing traditional shipping methods with available technology capabilities and future opportunities in Solomon Islands to build and maintain safe, energy efficient vessels.
12. Requested MTCC-Pacific to coordinate and facilitate a follow-up workshop with the Pacific Island Development Ship Safety Programme (PIDSS) to present and discuss progress on measures implemented in 2017-2018 related to energy efficiency and data collection in the Solomon Islands maritime transport industry.

# Opportunities and Learning

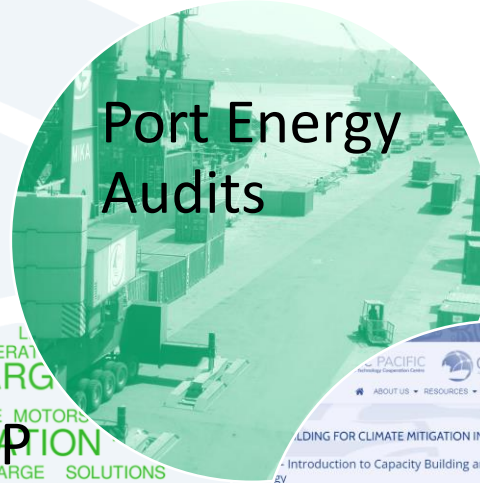
- Review energy efficient technologies for PIC vessel types
- Practical demonstration
- Data collection training

- Template developed through national and regional participation
- Conducted together with safety procedures with extensive involvement from ship operators and maritime administration

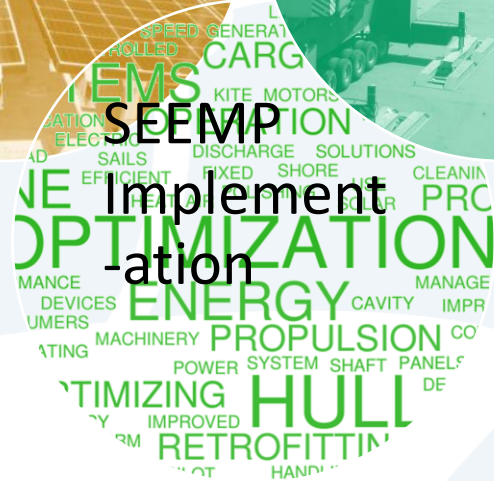
## Pilot Project



## Port Energy Audits



- Lighting upgrade to LED
- “Switch the light” new policy
- Green Pacific Ports



## Distance Learning



- Capacity building for climate mitigation in shipping industry
- Range of topics
- complete in own time/own pace





*The Global MTCC Network (GMN) project is funded by the European Union and is implemented by IMO*

THANK YOU

