



Preventing Pollution from ships

Launching of Public Awareness Campaign

Fourth Workshop with Ship Operators

20 March 2024

INTRODUCTION



Objectives of the Campaign

Ship Operators/Masters Responsibilities

National Pollution Fund

Campaign Strategy

CAMPAIGN OBJECTIVES



Increase
Public
Awareness



Behavioral
Change



Policy
Advocacy



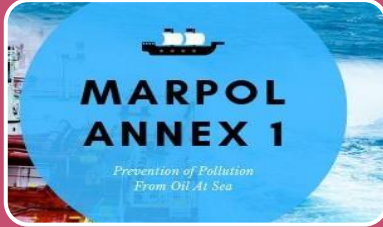
Community
Engagement



Partnership
Development

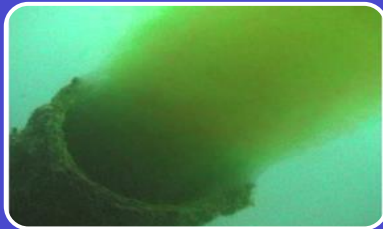


SHIP OPERATORS RESPONSIBILITIES



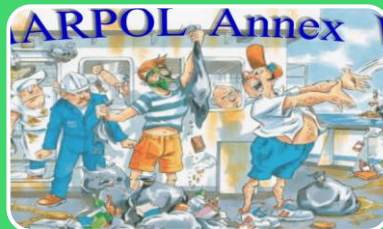
Ship Oil Pollution Emergency Plan (SOPEP)

- Developing & Implementation of ship-specific procedures and plans to prevent oil Pollution.
- This includes Ship oil spill response plan (SOPEP), oil record books, and pollution response equipment.



Sewage Management Plan (SMP)

- Managing sewage for discharge as per applicable standards
- This includes procedures for collection, treatment and discharge of sewage waters from ships



Garbage Management Plan (GMP)

- Developing & Implementing of Garbage Management Plan for their ships which include no discharge of plastics
- This includes procedures for collection, storage and disposal of garbage from ships



Ship Energy Efficiency Management Plan (SEEMP)

Develop and implement a SEEMP - document that should be tailored to the specific ship's needs and continuously updated to reflect changes in technology, regulations, and operational practices.

The MARPOL Convention is enforced through international cooperation, port state control inspections, and flag state regulations to ensure that ships comply with these pollution prevention measures.

NATIONAL POLLUTION FUND (POLFUND)

Shipping
(Marine
Pollution)
Regulations
2011 section 25
(1) & (2)

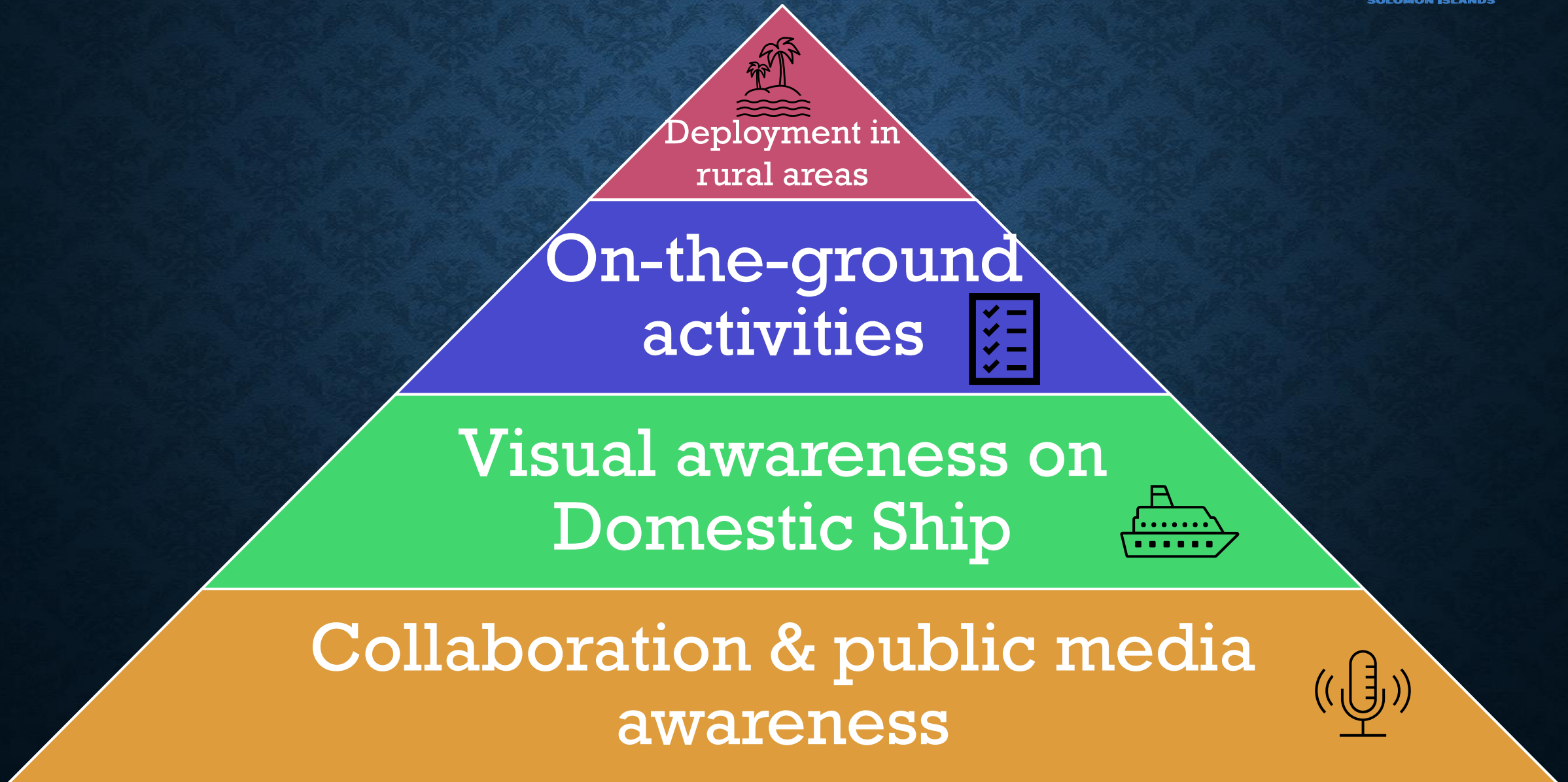
POLFUND
established
Administered by
SIMA
Overseen by
Marine Pollution
Advisory
Committee

Financing
NATPLAN
implementation

Meeting 2011
Regulations
obligations
Building the
capacity of SIMA
& stakeholders

2024 POLFUND
objectives:
Response
Recovery
Capacity
Awareness

CAMPAIGN STRATEGY





TAGIO TUMAS

E contact@sima.gov.sb

P (677) 21 535

PO Box 1932, Honiara
Solomon Islands

www.sima.gov.sb