

STATUS OF MARITIME BOUNDARIES AND EXTENDED CONTINENTIAL SHELF IN THE REGION

SEMINAR ON E-NAVIGATION ON OUR OCEAN-THE CONTRIBUTION OF SIMA-JICA PROJECT

Mr Tony Kabasi
Team Leader-Ocean Management and Literacy
Oceans and Maritime Programme
Geoscience Energy Maritime Division

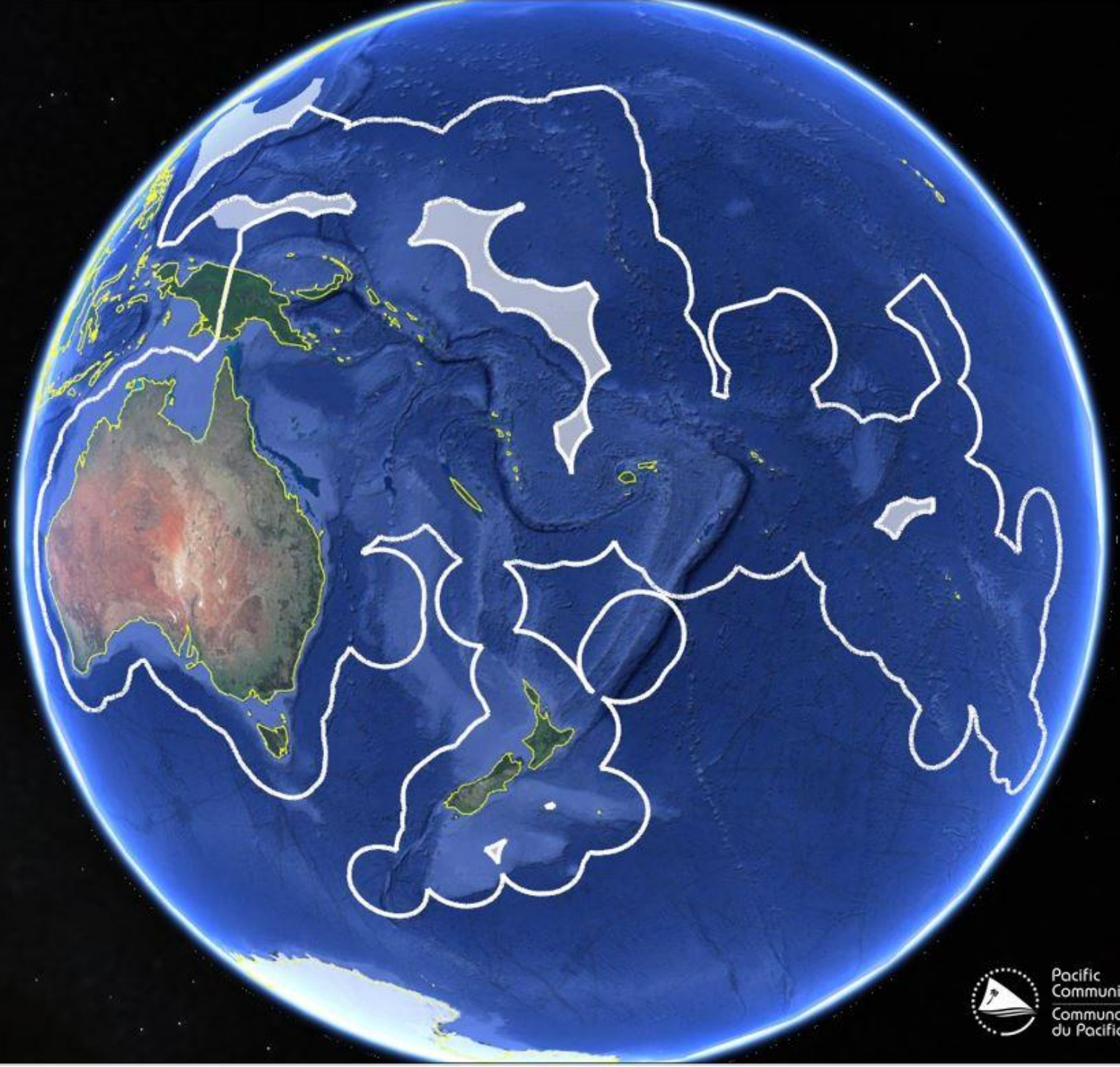
The Blue Pacific Continent

27 Pacific Countries
and Territories

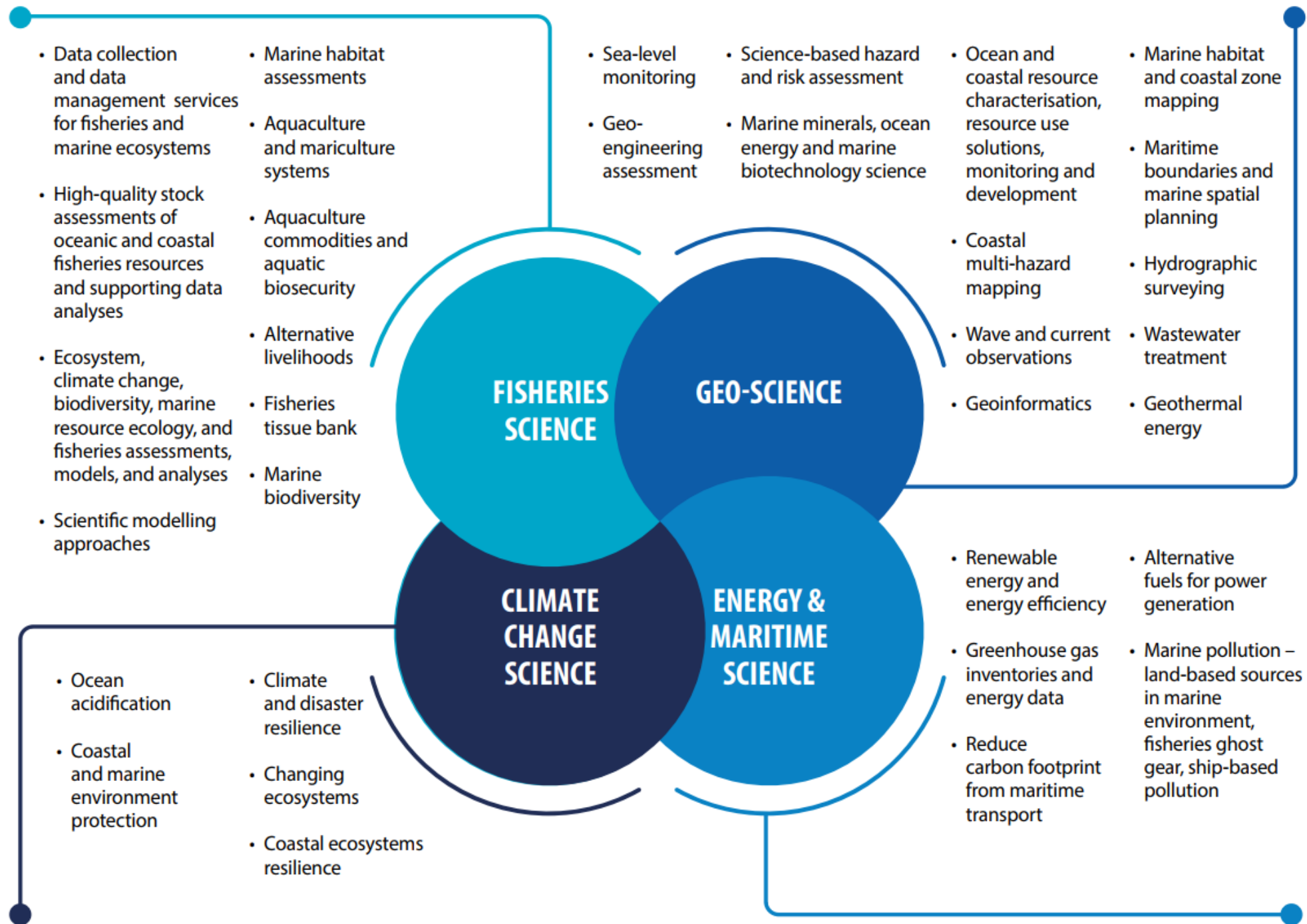
42 million people

42 million square
kilometres

30% of the world's
Exclusive Economic
Zones (EEZ)



SPC's expertise on ocean issues



SPC's Ocean Flagship

Pacific peoples voyaging together to steward a healthy, resilient, sustainable, and prosperous Blue Pacific for future generations.

This will be achieved by contributing to the effective management of ocean activities by Pacific peoples, balancing the use of ocean resources with ocean protection.

A predictable and safe ocean

This encompasses SPC's work on coastal hazards modelling, early warning systems, maritime transport and ocean acidification.

An inspiring and engaging ocean

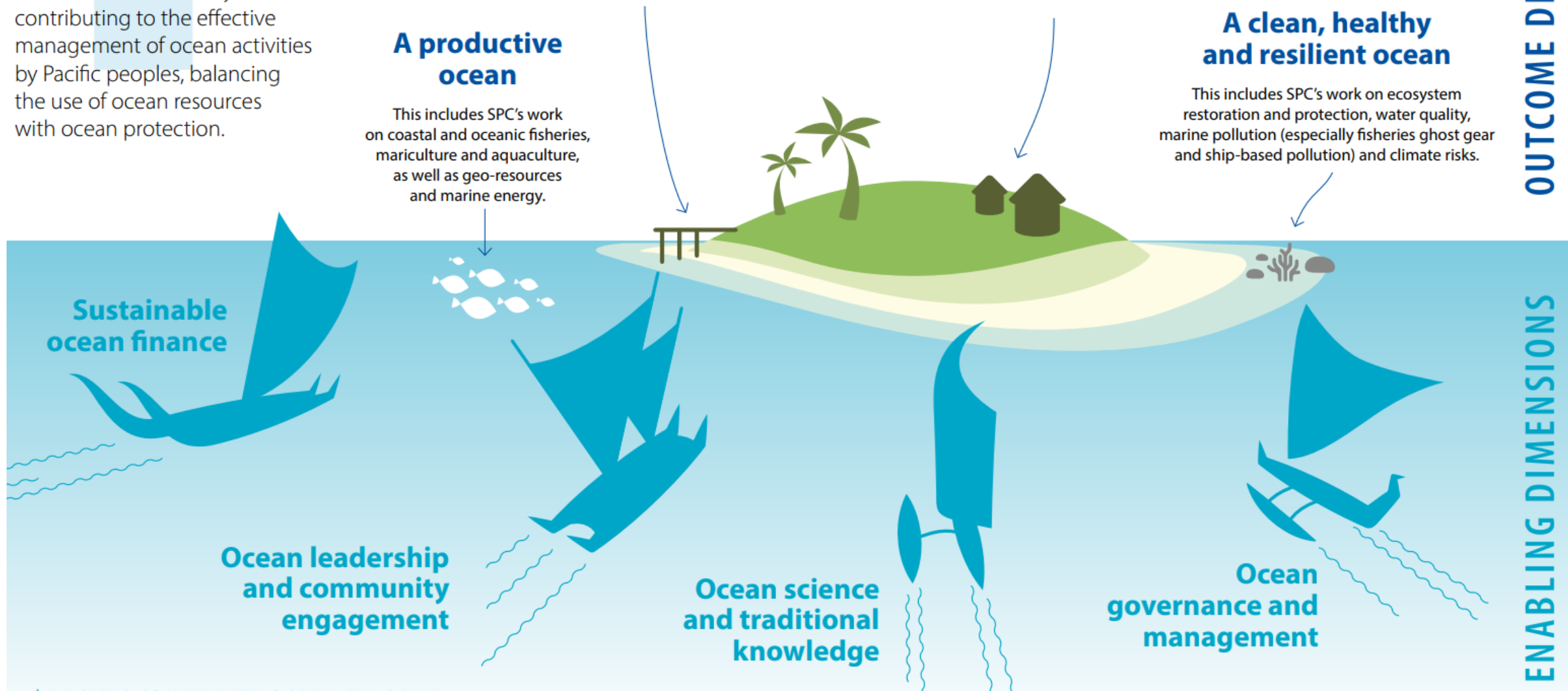
This includes SPC's work on ocean literacy, ocean leadership (leadership courses, Early Career Ocean Professionals and support to ocean career pathways for Pacific Islanders), community engagement, co-development of tailored ocean products and services, sustainable tourism and the people-centred approach, including gender equality, diversity and social inclusion (GEDSI).

A productive ocean

This includes SPC's work on coastal and oceanic fisheries, mariculture and aquaculture, as well as geo-resources and marine energy.

A clean, healthy and resilient ocean

This includes SPC's work on ecosystem restoration and protection, water quality, marine pollution (especially fisheries ghost gear and ship-based pollution) and climate risks.



OUTCOME DIMENSIONS

ENABLING DIMENSIONS

What Role Does SPC Play?

Technical Advice and Support



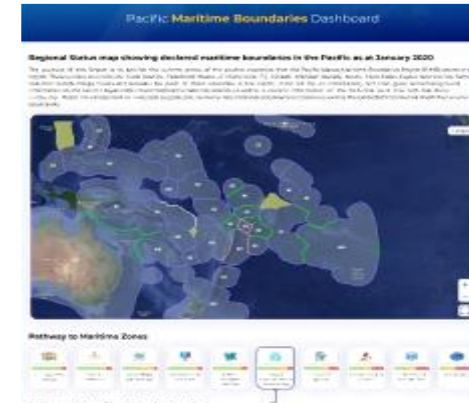
- Technical backstopping for in-country basepoint surveys
- Mapping and delimitation support
- Advising on UN submissions process
- Supporting negotiations
- Extended Continental Shelf submissions support

Capacity Building



- Organising annual Working Sessions at UniSydney
- Hosting attachments
- National workshops
- Organising relevant training, webinars, and other development opportunities

Data Stewardship & Accessibility



- Comprehensive dataset hosting on behalf of countries
- Improving accessibility of published info on Pacific Data Hub
- MB Dashboard in development

Coordination & Project Development



- Host monthly Consortium partner meetings
- Home of Pacific Geospatial and Surveying Council Partnership Desk
- Communications and engagement strategy
- Develop project proposals

Hydrographic surveying capacity and capability

Equipment

- R2Sonic 2024 shallow water (400m) MBES
- RESON 8160 deep water (2000m) MBES
- SBES (200kHz and 10KHz)
- CTD and SVP
- Precision GPS GNSS equipment (R10, R12, R14)
- Tide gauges(Valeport)
- Pressor sensors (RBRs)
- Side scan sonar (Cmax EDF dual frequency)

Vessel

- Dedicated survey platform (5.7m flat bottom with 150Hp motor)

Staff

- CAT B surveyor
- Geodetic surveyors
- Oceanographers

Note

For request of staff and equipment for SPC member countries and territories

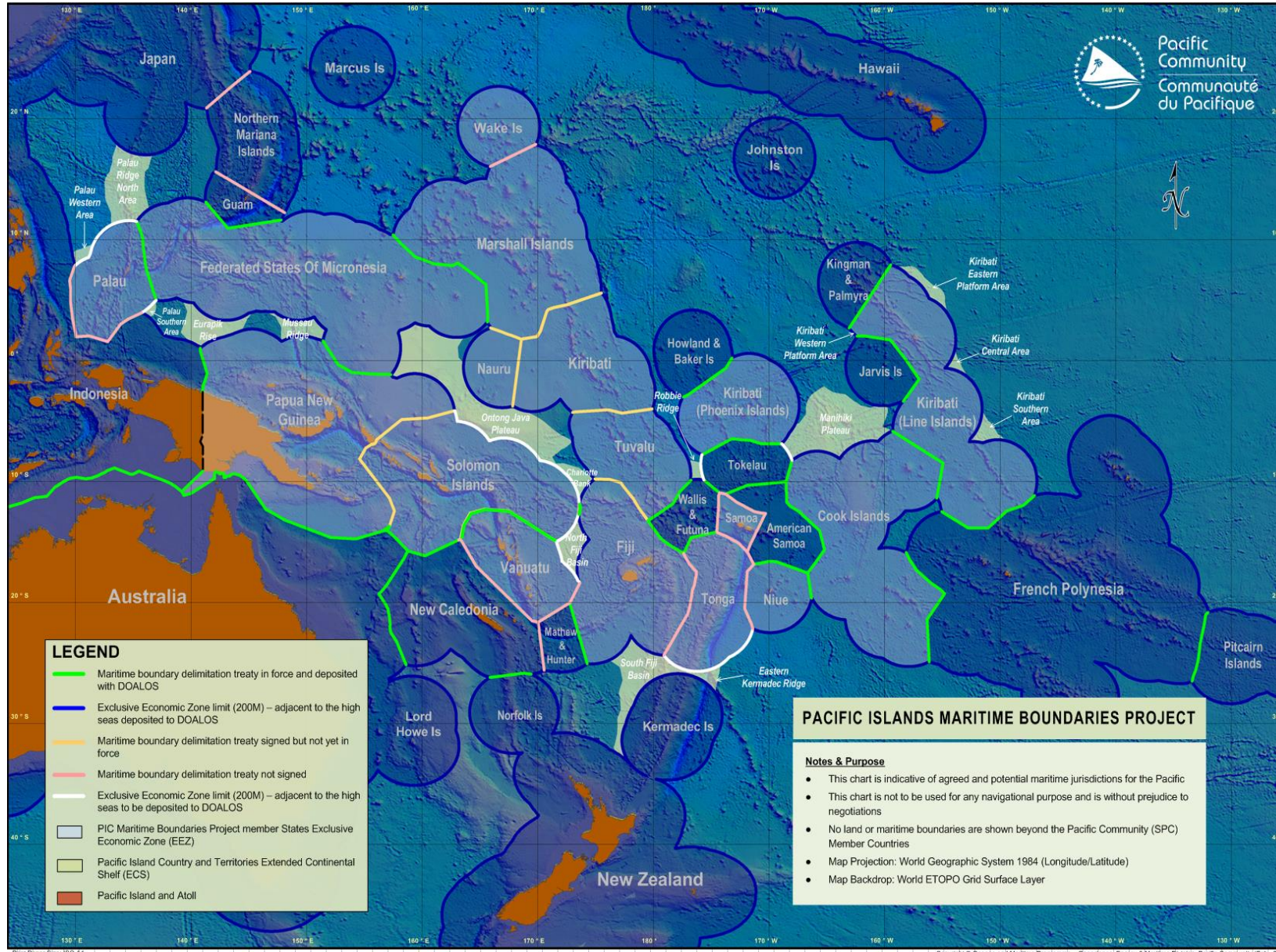
- *An official letter of request from FA to SPC Director*



UNCLOS

- United Nations Convention on the Law of the Sea
- “Constitution for the Oceans”
- Divides the ocean space into maritime zones which includes the internal waters, territorial seas (12 nm), contiguous zone (24 nm), exclusive economic zone (‘EEZ’) (200 nm), (extended) continental shelf, high seas and the international seabed (or the ‘Area’).
- Article 76 of UNCLOS outlines the condition for coastal State can claim exclusive rights to search for and utilize resources found on the continental shelf that extends beyond 200 nautical miles exclusive economic zone (EEZ).
- 19 ECS submissions at various stages in the queue awaiting examination and recommendation from the Commission on the Limits of the Continental Shelf (CLCS).
- **Only Ontong Java Plateau and the Tonga Eastern part of Kermadec Ridge have received recommendation from CLCS.**
- Other claims are in submission phase.

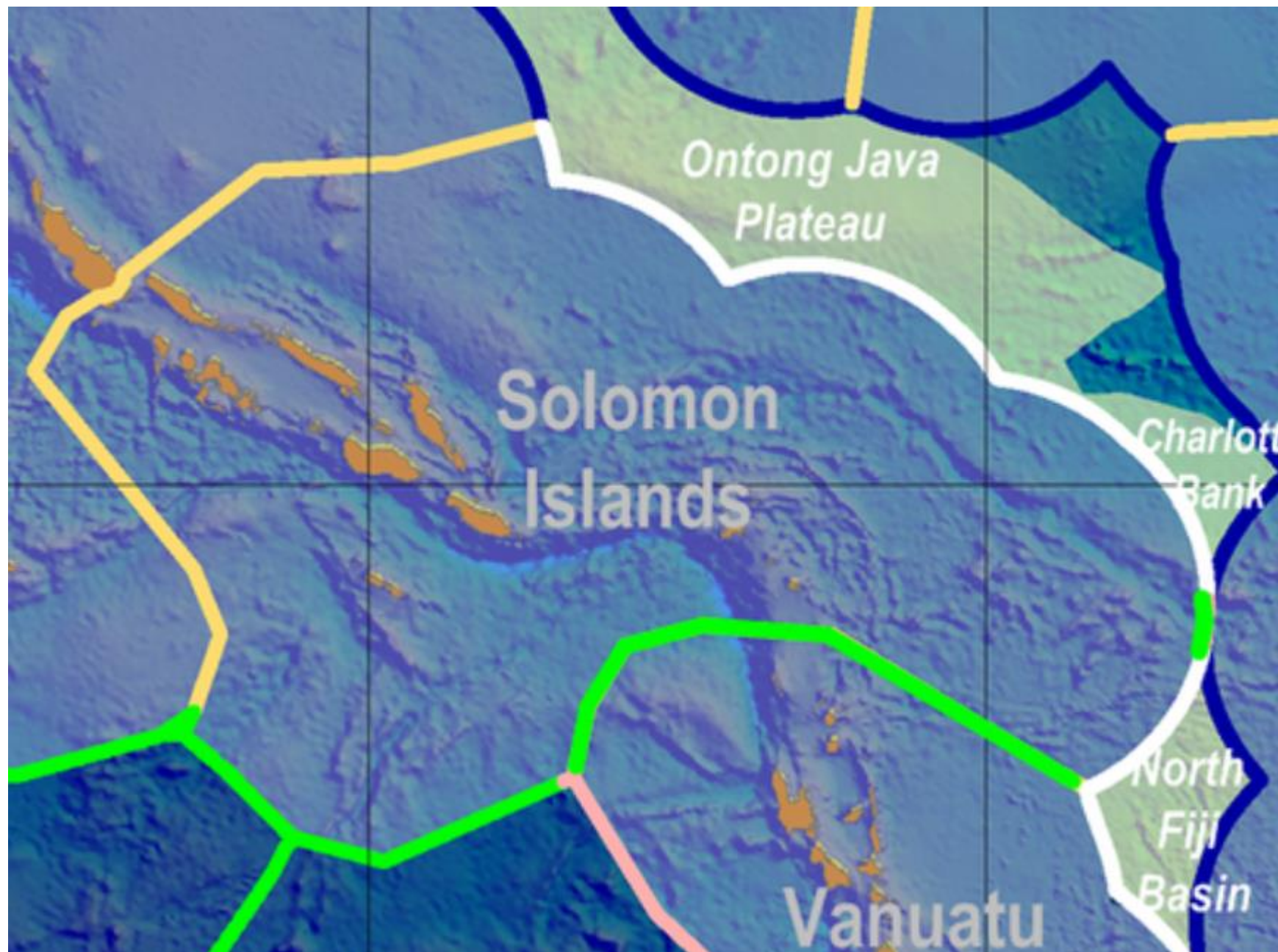
Pacific Maritime Boundaries; Current



- **36 out of 48 shared boundaries are under treaty**
- **6 treaties** remain to be brought into force **(yellow)**
- **12 shared boundaries** remain to be signed **(pink)**
- **5 countries high seas limits** have yet to be declared **(white)**

Extended Continental Shelf:

- 3 out of 11 of ECS submissions have been reviewed. 2 have received recommendations.
- Another are preliminary info notes, requiring more data.



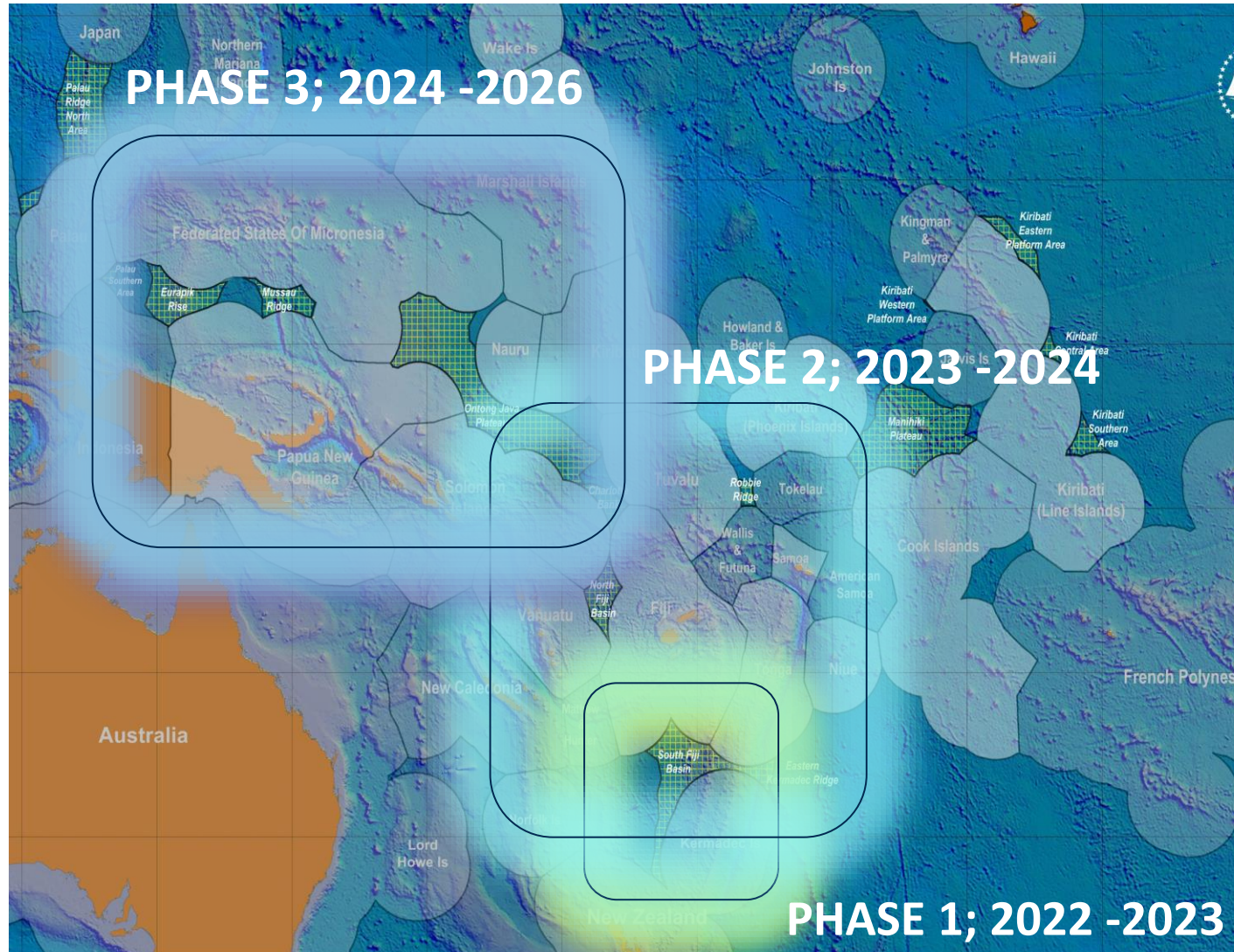
VU-SB: Mota Lava Treaty signed and ratified. Also have Tirvau Agreement as an extension to the Motalava Treaty.

2 x high seas boundaries to be declared

SB-PG: Treaty signed but not yet in force. Work to be done.

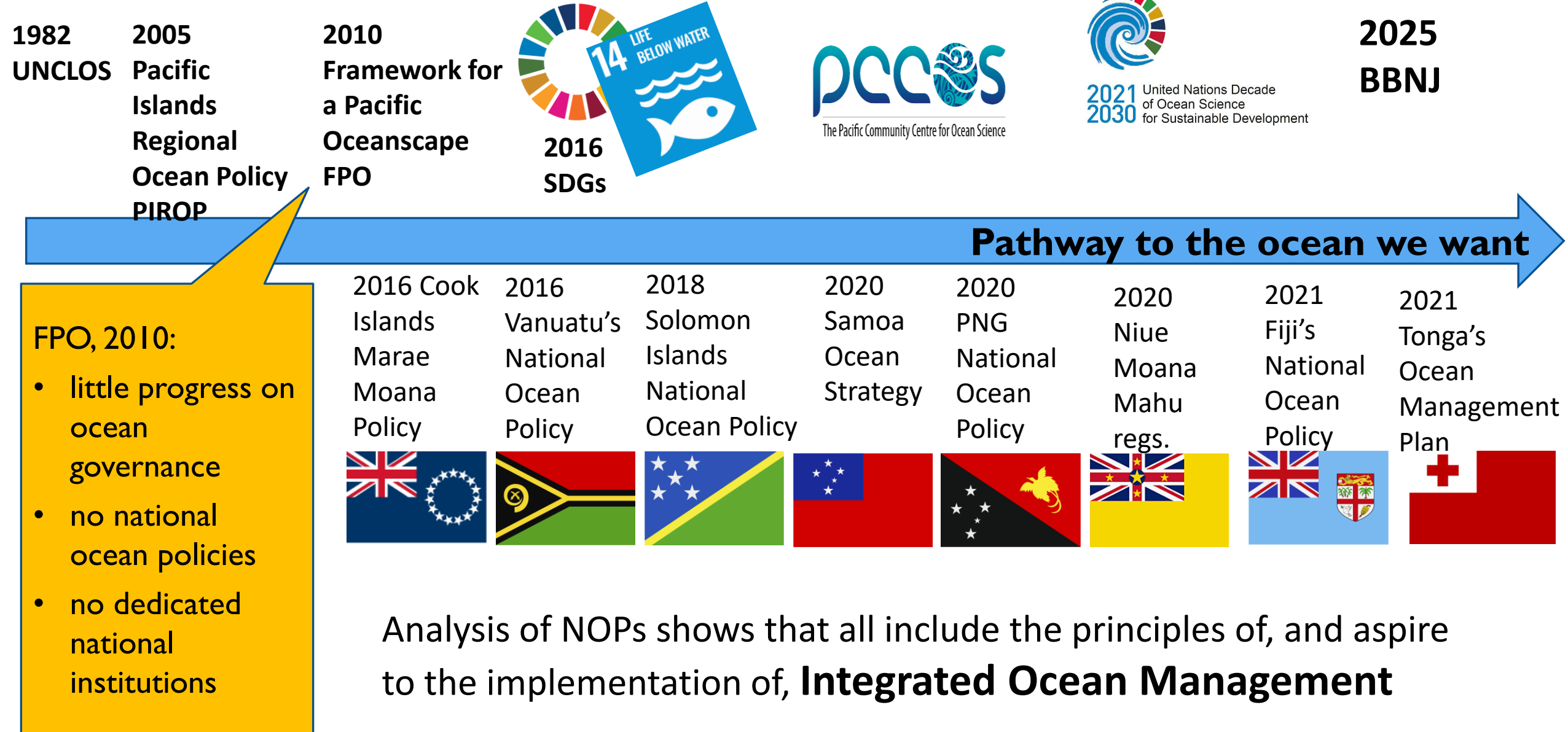
ECS:
See next slides

Pacific Extended Continental Shelf Project



ECS Area	Countries	Status
South Fiji Basin	FJ	Cabinet Approval To submit to UNDOALOS
ECS Area	Countries	Status
North Fiji Basin	FJ/VU/SB	Cabinet approval completed. In submission phase
Melanesian Borderland Plateau	FJ & SB	Cabinet approval completed. In Submission phase.
ECS Area	Countries	Status
Ontong Java Plateau	FM/PG/SB	Under review
Eauripik Rise	PG	In Progress
Mussau Ridge	PG	In Progress
SB Enclave	SB	Report Developed

Advancement



**Pacific solutions for
Integrated Ocean
Management to
sustain livelihoods
today and into the
future**

Officially Endorsed Action



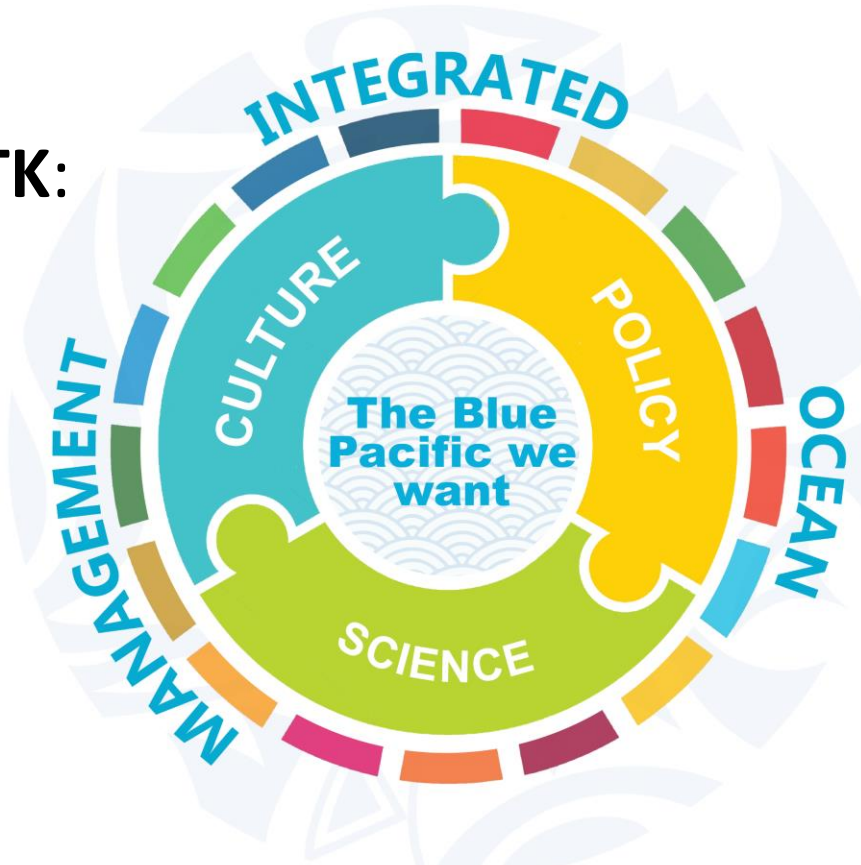
**2021
2030** United Nations Decade
of Ocean Science
for Sustainable Development

Integrated Ocean Management



CULTURE & TK:

Actions are
inclusive of
traditional
knowledge



LAW & POLICY:

Robust legal
instruments
and policy
frameworks

SCIENCE: Improved
decision support
systems



Pacific
Community
Communauté
du Pacifique

TAGIO TUMAS!